



COLOURED
FINISHINGS
FOR BUILDING

Catalog

Condizioni generali di vendita

IL PRESENTE CATALOGO ANNULLA E SOSTITUISCE I PRECEDENTI

Ordinazione: Le presenti condizioni generali di vendita e di consegna si intendono assunte dal Compratore con il conferimento e la sottoscrizione dell'ordine. Eventuali deroghe devono risultare solo se specificatamente concordate per iscritto.

Ordine minimo: L'ordine deve essere dell'importo minimo di 200,00 € al netto di IVA ed eventuali sconti.

Accettazione ordine: Tutti gli ordini devono essere trasmessi in forma scritta e sono assunti salvo nostra definitiva approvazione.

Il Compratore, trasmesso l'ordine, implicitamente dichiara di accettare le nostre condizioni generali di vendita, di essere a conoscenza delle caratteristiche dei prodotti e delle modalità per il loro corretto uso e impiego. Fornaci Calce Grigolin diffida l'errata destinazione e l'uso scorretto dei suoi prodotti e ne consiglia sempre l'impiego come previsto nelle sue schede tecniche e nelle istruzioni riportate nella confezione o nell'etichetta applicata.

Il Venditore si riserva di accettare o di sospendere l'ordine integralmente o parzialmente, anche se in precedenza già accettato, soprattutto quando la sua esecuzione sia resa impossibile da fattori imprevisti, irragionevolmente onerosi o da cause di forza maggiore tipo disfunzioni di esercizio o carenze di materia prima. Il Compratore è tenuto ad accettare l'esecuzione anche parziale dell'ordine e rinuncia a esercitare alcun diritto di indennizzo o qualsiasi rivalsa per ritardi di fornitura.

Fido: L'accettazione dell'ordine è subordinata al fido entro il quale è limitata l'esposizione. Tale valore è definito dall'importo nelle forniture eseguite e non ancora saldate, nonché dagli ordini in corso non ancora fatturati. Il limite di fido viene stabilito all'inizio del rapporto contrattuale e viene convalidato annualmente; salvo nel caso di frequenti insoluti RIBA o sensibili ritardi nei pagamenti per i quali può essere anche revocato. Si interrompe l'esecuzione delle forniture qualora in scheda contabile si rilevi un saldo aperto per insoluti o per fatture scadute non pagate.

Prezzi: I prezzi si intendono riferiti al listino in vigore al momento dell'ordine, al netto di qualsiasi onere fiscale (IVA) e sono espressi in Euro (€). L'azienda Fornaci Calce Grigolin si riserva la facoltà di poter variare i prezzi in listino anche senza alcun preavviso. In ogni caso con l'entrata in vigore di un nuovo listino, che annulla e sostituisce il precedente, decadono anche automaticamente le quotazioni definite particolari sia per i prodotti di serie che per quelli da approntare su specifica richiesta del Cliente.

L'Azienda si impegna nel garantire il livello di qualità dei prodotti messi a disposizione, ma si riserva la facoltà di apportare in qualsiasi momento modifiche tecniche necessarie ai propri prodotti e confezioni. Ordini per tinte a campione o tinte diverse da quelle previste nei nostri campionari vengono evasi applicando una maggiorazione che sarà comunicata di volta in volta dal nostro ufficio commerciale.

Per le produzioni di colorati, non realizzate a tintometro, la Società si riserva la facoltà di effettuare consegne con uno scarto di 2-3 vasi in eccesso rispetto ai quantitativi ordinati.

Condizioni di resa, termini di consegna e spedizione: Per le confezioni dei prodotti presenti nel nostro listino l'evasione dell'ordine è prevista entro il termine massimo di 10 giorni dalla data di ricevimento dell'ordine. I termini di consegna, anche se concordati, non sono rigorosi essendo subordinati a numerose variabili e imprevisti, pertanto l'Azienda non è tenuta ad alcun risarcimento di qualsiasi natura al Committente per il mancato rispetto degli stessi. In ogni caso il l'acquirente rinuncia al diritto al risarcimento per eventuali danni diretti ed indiretti derivanti dal mancato rispetto del termine di consegna.

La merce dovrà essere sempre ritirata dal Committente. Indipendentemente dalla destinazione e dalle condizioni di vendita, la consegna viene intesa franco partenza presso il nostro Stabilimento di Medesano (PR) o altra nostra sede di appartenenza Fornaci Calce Grigolin, quale unità produttiva o deposito di riferimento all'ordine.

La merce viaggia sempre a rischio e pericolo del Committente, anche quando viene resa franco destino. E' obbligo del Committente controllare la merce all'arrivo. Eventuali anomalie, ammanchi e difettosità di qualsiasi genere, in particolare numero dei colli, peso, danneggiamento della confezione, devono essere contestati immediatamente al vettore per iscritto sul documento di trasporto o bolla di consegna, facendola controfirmare allo stesso vettore. Copia della bolla controfirmata dovrà essere inviata alla nostra Società per effettuare la rivalsa nei confronti del vettore. I reclami per vizi della merce saranno ammessi solo se effettuati nei termini di legge.

Eventuali reclami o contestazioni non danno diritto all'Acquirente di sospendere o comunque di ritardare il pagamento della merce oggetto della contestazione o di altre forniture.

Condizione di pagamento: Si riconoscono solo i pagamenti effettuati presso la sede della nostra Società o a persona munita di nostra autorizzazione scritta. Il pagamento si intende per l'importo totale della fattura e deve essere effettuato entro i termini stabiliti, senza apportare sconti, detrazioni e abbuoni, salvo quelli espressamente convenuti. I pagamenti tramite Ricevuta Bancaria o tratta di qualsiasi genere comportano l'addebito delle spese di incasso e dell'eventuale imposta di bollo.

Il venditore si riserva la proprietà delle apparecchiature tintometriche e dei materiali forniti fino al pagamento dell'intero prezzo o dell'ultima rata di prezzo.

Interessi moratori: In caso di mancato rispetto delle condizioni di pagamento previste contrattualmente verrà applicato un interesse di mora in ragione del tasso ufficiale di sconto maggiorato di sette punti percentuali a partire dal momento in cui il pagamento sarebbe dovuto avvenire. Sugli insoluti saranno inoltre addebitate le spese bancarie e quelle previste per il recupero del credito. In caso di ritardo di pagamento, il Venditore avrà facoltà di sospendere le consegne in corso e potrà, a sua discrezione, risolvere il Contratto.

Imballi - Pallet: Nel rispetto della normativa CEE e delle Leggi Nazionali sono indicati chiaramente nel listino il modo di confezionamento e di vendita dei nostri prodotti: volume (l), peso netto (kg). Unitamente ai prodotti si intendono ceduti a titolo definitivo anche i loro contenitori/imballi e confezioni, al prezzo e alle condizioni in vigore al momento della spedizione. Il ritiro e lo smaltimento dei contenitori vuoti o semilavorati sono, in ogni sua fase, a carico dell'utilizzatore del prodotto (D.P.R. 915/1082).

Resi: Non si accettano resi merce senza nostra preventiva autorizzazione scritta.

Garanzia: I nostri prodotti vengono fabbricati, controllati e destinati alla vendita solo se viene riscontrato che sono corrispondenti ai nostri standard. Fornaci Calce Grigolin non offre alcuna garanzia sull'uso improprio ed errato dei prodotti, pertanto non potrà essere attribuita all'Azienda alcuna responsabilità e richiesta di indennizzo per eventuali danni di qualsiasi genere.

Reclami: I reclami per vizi e non conformità della merce devono essere comunicati immediatamente e inviati alle nostre sedi in forma scritta. Per un eventuale controllo, nel reclamo scritto deve essere chiaramente segnalato, oltre a tutte le indicazioni del prodotto, anche il numero di lotto di fabbricazione indicato nell'etichetta. L'eventuale sostituzione della merce per reclamo fondato, dovrà sempre essere autorizzata da Fornaci Calce Grigolin che non riconoscerà alcun risarcimento o qualsiasi pretesa di altro genere. Reclami per differenze prezzi e/o sconti dovranno pervenire entro 30 gg dalla data della fattura indicando all'Azienda ogni estremo del documento.

Colori a tintometro: Prima della vendita al consumatore finale è compito e obbligo del rivenditore controllare la conformità dei colori che realizza con il sistema tintometrico. In tal modo le differenze di tonalità potranno essere corrette prima dell'applicazione del prodotto. Fornaci Calce Grigolin pertanto non risponderà per eventuali contestazioni o richieste di risarcimento da parte dell'utilizzatore in merito alla difformità della tinta fornita.

Normativa D.L. 161/2006: I valori di VOC riportati nelle etichette, imballi e schede tecniche dei prodotti, sono validi solo utilizzando le indicazioni di diluizione e le paste tintometriche di Fornaci Calce Grigolin. L'utilizzatore, nei confronti della legge, è responsabile di differenti valori di VOC immessi nell'ambiente qualora non rispetti le indicazioni fornite.

Foro competente: Qualsiasi controversia derivante dal contratto o dal prodotto, o in relazione a essi, sarà sottoposta al giudizio del Foro unico e competente di Treviso.

Informativa art. 13 D. Lgs. 196/2003 Codice della Privacy. I Vostri dati personali in nostro possesso verranno trattati per finalità di gestione commerciale, amministrativa e finanziaria e potranno essere comunicati al nostro personale incaricato alle funzioni. I Vostri dati non sono oggetto di diffusione. Le sono riconosciuti i diritti di cui all'art. 7 del D. Lgs. 196/2003. Troverà l'informativa completa consultando il ns. sito all'indirizzo www.fornacigrigolin.it. Le informazioni contenute nella presente comunicazione e i relativi allegati possono essere riservate e sono, comunque, destinate esclusivamente alle persone o alla Società sopraindicati.

La diffusione, distribuzione e/o copiatura del documento trasmesso da parte di qualsiasi soggetto diverso dal destinatario è proibita, sia ai sensi dell'art. 616 c.p., che ai sensi del D. Lgs. 196/2003.

Index

About Us	pag. 4
Colour Project	pag. 6

Calce d'epoca	
Decoratives	pag. 18
Outdoor finishing	pag. 20

Washables Paints	pag. 22
-------------------------	---------

Comfort & Benessere	
Indoor paints	pag. 32
Sanitizers	pag. 35

Transpiring Paints	pag. 36
---------------------------	---------

Outdoor Paints	
Smooth and thick paints	pag. 44
Water repellent solutions	pag. 49

Coatings	pag. 50
-----------------	---------

Primers and Fixatives	pag. 56
------------------------------	---------

Surface preparation Primers	
Water dispersion products	pag. 62
Solvent based products	pag. 67
Related products	pag. 68



InfinituS	
Floor decoration	pag. 70

i-RIFLEKTA nanotechnology	pag. 74
----------------------------------	---------

Colouring pastes and tinting bases	pag. 80
---	---------

About us

Fornaci Calce Grigolin is specialized in the production of lime, paints, adhesives and premixed products for the construction industry.

Today, Fornaci Calce Grigolin is one of the most important companies in Italy and abroad in the field of building materials and technologies.

In Ponte della Priula, in the 1950s, Giobatta Grigolin began his entrepreneurial adventure in an area with a deep tradition in lime production. The first Grigolin lime kiln was put into operation in 1963 and after only three years the production was tripled.

The resulting development transforms the small family business into an important reality of Italian industry. At the end of the 1980s, the development process began, with the entry into the market for construction products and the construction of new plants and production sites. Maurizio, Roberto and Renato, their sons, developed the Group's activities over the following decades, and in recent years the third generation of the Grigolin family has also been involved in the management and coordination of numerous production and business companies.

In 2006, a modern and technologically advanced paint factory was started at the Medesano (PR) plant, offering the consumer a wide range of products of the highest quality.

The desire to continue the path oriented towards organic, natural and "traditional" products is reflected in the new Palladio line: plasters and coloured finishes, based on aerial lime, for the restoration of historic buildings and structural consolidation of walls.

The geographical expansion, technological innovation and the presence of highly qualified staff have allowed Fornaci Calce Grigolin to become a leader in the field and to express its value through:

- **Large systems of synergies;**
- **Diversification and vertical integration of productive sectors;**
- **Technological development and applied research;**
- **Continuous attention to environmental values.**



Generation to generation



Maurizio
Grigolin



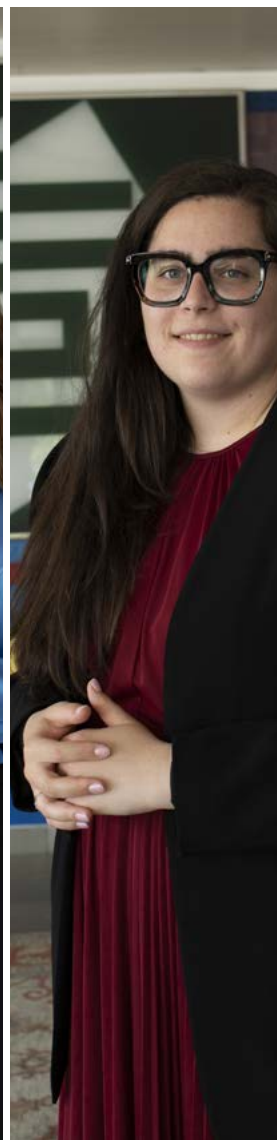
Francesca
Grigolin



Giambattista
Grigolin



Patrizia
Grigolin



Paola
Grigolin



Colour Project

arteMuri is a paints and finishings line of Fornaci Calce Grigolin. Thanks to these products of high quality and advanced technology, the company presents itself as a unique supplier for a whole application cycle, from primers to finishings.

The experienced gained during years spent on building sites and the studies done by our technical staff and the R&D laboratory developed into a wide range of types of paint products.

- **interior finishings:**
CALCE D'EPOCA - WASHABLE - COMFORT & BENESSERE - TRANSPIRING
- **exterior finishings:**
PAINTS - COATINGS
- **primer:**
PRIMER - FIXATIVES - BASES
- **decorative floor/wall:**
INFINITUS
- **thermal comfort:**
i-RIFLEKTA
- **tintometric system:**
COLOURING PASTES - TINTOMETRIC BASES

Paint Factory in Medesano PR



Recognition

With this new concept, the brand is recognized in all sales points and on all building sites.

Uniqueness

The ability to maintain brand identity and communicate to users that not all products are equal, is transmitted.



Quality

arteMURI products are above average quality and maintain high technical performance.

Sustainability

Environmentally friendly packaging for the entire product range, with optimized production processes and constant control of compositions, reducing the VOC content in compliance with CAM regulations .

The Grigolin brand dedicated to indoor and outdoor finishes combines the emotions provoked by colour in different forms of art: painting, sculpture, furniture, architecture.

The choice of quality raw materials is reflected in the finishes for living rooms or for outdoor decorations in harmony with nature and in perfect compatibility with the environment, realizing the passion that Grigolin puts in all its products.

With a complete range of siloxane, lime-based, silicate-based and acrylic products, arteMURI offers the solutions sought by architects and designers combining quality, research and decoration.

The automatic control of raw materials during production process minimizes machine downtime and allows a constant balance of components and greater quality control, as well as avoiding waste and material pollution.



A+ products



arteMURI formulations are the result of a careful selection of raw materials, to comply with European safety regulations and respect the environment. All production is managed to protect the health and work of the people involved in every stage of the process, ensuring a healthy and welcoming environment for the user.

Water-based paints classified A+ measure the amount of volatile organic compounds released by a paint, giving it the best class of merit, and are particularly respectful of living well, with the lowest level of indoor pollutant emissions, according to the strict French VOC Regulation 321/2011.

Analysis and continuous search for the best solutions: slow release



Comfort & Benessere interior finishing products comply with UNI EN 15457 on resistance to fungal growth with test methods for determining the effectiveness and protection of the paint layer and dry film.

PROTECTION ACTIVE describes the result obtained in collaboration with the innovative microencapsulation technology AMME (Advanced Micro Matrix Embedding) developed by THOR SPECIALTIES, to effectively inhibit the development and growth of moulds on treated substrates.



The exterior finishes marked ENCAPSULATION TECHNOLOGY comply with the standard UNI EN 15458 with resistance and inhibition to algae growth as well as fungi and moulds. The AMME technology combines a wider spectrum of protection against pests with greater stability of the biocide for a

more gradual release over time. The products do not deteriorate by leaching or irradiation and the film is much more effective and durable over time, more sustainable and environmentally friendly.

Sustainable packaging: Second Life Plastic Plastica Seconda Vita



Packaging is essential for treatment, storage, transport, protection and preservation of products. Life end is only one of the elements which a packaging is called to meet, and prevention is the first step to minimize environmental waste impacts.

The arteMURI packages are now made with recycled plastic branded "Plastica Seconda Vita" - Second Life, an environmental certification system

dedicated to materials and artifacts obtained from enhancement of plastic waste.

This certification introduces the "Quality" concept in recycling plastics, with the aim of encouraging dissemination and development of environmentally sound products, through research and choice of solutions with the least possible impact on the environment throughout the entire life cycle.





Tintometric system up to 60.000 formulations

arteMURI is the perfect tintometric system for the point of sale dedicated to color and decoration. The colouring pastes are produced in our Medesano site to guarantee a faithful colour reproduction and maximum coverage for any volume.

The rich ATELIER 502 color chart, plus 2050 colors NCS (world leader in color selection technology) is able to meet any color requirement beyond the new management program of tintometric formulas in memory, from 20,000 to 60,000.

The new ATELIER 502 selection is the result of decades of experience in construction sites and studies carried out by our technical staff and research and development laboratory, that led to the birth of a range of colors with a contemporary taste but also versatile for all interventions on the historical and monumental building heritage.



Colore sicuro: value beyond the color

Fornaci Calce Grigolin, with the brand arteMURI, is a member of Assovernici, with the intent to promote the use, by consumers, of quality paints with certified performances and conforming to national and international regulations.

The brand ASSOVERNICI wants to enhance the commitment of the manufacturers of paints who choose to operate in transparent conditions and in compliance with precise sustainability parameters, contributing to the creation of a culture of industry among professionals and among private individuals.

For more information check www.assovernici.it



QUALITÀ DEI PRODOTTI

Priorità assoluta nel dichiarare prestazioni certificate da test effettuati nei laboratori in conformità alle normative nazionali e internazionali.



SALUTE E SICUREZZA

Operare responsabilmente per la salvaguardia della salute e sicurezza degli operatori nei siti produttivi, degli utilizzatori e dei loro clienti.



AMBIENTE

Privilegiare le tecnologie più pulite ed i prodotti ecosostenibili con particolare attenzione al risparmio energetico.



TRASPARENZA

Agevole accessibilità a tutte le informazioni delle aziende associate, i loro prodotti, i servizi.



SOCIETÀ

Contribuire al progresso tecnologico operando come attori impegnati nel contesto sociale, economico e culturale.



INFORMAZIONE

Elevare la conoscenza dei prodotti aiutando il consumatore a scegliere quello più adatto alle sue necessità utilizzando un linguaggio chiaro e autentico.

The best qualities of an antique material in a range of finishes and decorations



CALCE D'EPOCA



calce d'epoca





SPATOLA

POLISHED DECORATIVE FINISH BASED ON SLAKED LIME

High quality mineral finish for interior with excellent breathability and ease of application, creates an antique effect and soft shades of color with a smooth and shiny look. Thanks to the precious raw materials with which it is made, SPATOLA can be polished to give elegant transparencies or classic Venetian spatulate effects.

dilution

ready-to-use

covering time

10-12 hrs

theoretical yield

2 m²/kg

FEATURES

- shiny effect
- mineral decorative finish
- high breathability
- ease of application
- high vapour permeability, class I according to UNI EN ISO 7783-2
- for decoration of valuable interiors
- creates an antique effect and soft chromatic shades with a smooth and shiny look

CODES

Code	base	bucket (kg)
544605	0100 white	5
544620	0100 white	20
544685A	traditional colors - cat. A	5
544681A	traditional colors - cat. A	20
544685B	trendy colors - cat. B	5
544681B	trendy colors - cat. B	20



MARMO CALCE

DECORATIVE FINISH WITH A MARMOR EFFECT BASED ON SLAKED LIME

High quality mineral finish for interior containing marble powder that allows to obtain the marmorino effect and multiple decorative effects. It has excellent breathability and ease of application. It is characterized by the soft and elegant finish with matt colors and warm tones, to give the environment a cozy and sophisticated atmosphere in the realization of a classic element of Italian decoration.

dilution

ready-to-use

covering time

10-12 hrs

theoretical yield

0,65 m²/kg

FEATURES

- marble effect
- mineral decorative finish
- excellent breathability
- ease of application
- high vapour permeability, class I according to UNI EN ISO 7783-2
- base coat for skim plasters
- gives a silky look that mimics the pleasant and compact effect of classic marmorino

CODES

Code	base	bucket (kg)
544820	0100 white	20
544881A	traditional colors - cat. A	20
544881B	trendy colors - cat. B	20



TRAVERTINO

DECORATIVE COATING WITH TRAVERTINE EFFECT BASED ON SLAKED LIME

Mineral finish in paste for high quality interior that reproduces effects and aspects of natural finishes such as travertine, monumental stones, multiple forms and material and chromatic effects of the past. Excellent water vapour permeability.

dilution

25-30% with water

covering time

10-12 hrs

theoretical yield

0,65 m²/kg

FEATURES

- travertine effect
- mineral decorative finish
- excellent breathability
- high vapour permeability, class I according to UNI EN ISO 7783-2
- reproduces the classic finishes in travertine effect, marble and antique stone, with the typical shades of stones monumental and artistic

CODES

Code	base	bucket (kg)
545020	0100 white	20
545081A	traditional colors - cat. A	20
545081B	trendy colors - cat. B	20





PENTACALCE

MINERAL ECO-PAINT BASED ON SLAKED LIME FOR INTERIORS AND EXTERIORS

Mineral finish for decorations of buildings of historical and artistic interest and for works in green building. It has a mineral opaque film with excellent water vapour permeability, excellent coverage and easy application.

theoretical consumption

0,13 litri/m²
per layer

theoretical yield

3,8 m²/litro with two layers

covering time

6-8 hrs

dilution brush

15% with water
first layer
20% with water
second layer

dilution roll

5-7% with water

FEATURES

- excellent breathability
- sanitizing action and resistance to the formation of molds and bacteria
- high vapour permeability, class I according to UNI EN ISO 7783-2
- thickness of the equivalent air layer $S_d = 0,047$ m

CODES

Code	base	bucket (lt)
552150	0100 white	5
552151	0100 white	15
552180A	traditional colors - cat. A	5
552181A	traditional colors - cat. A	15
552180B	trendy colors - cat. B	5
552181B	trendy colors - cat. B	15



MARMORINO NATURALE

MINERAL MARMORINO BASED ON SLAKED LIME FOR INTERIOR AND EXTERIOR

Decorative finish to obtain marble material effects and chromatic shades, combined with excellent breathability and resistance to the formation of mold and bacteria. Product indicated as an ideal finish for the restoration of historic centres and in interventions in the field of green building.

theoretical consumption

1,8-2,2 litri/m²
per layer

theoretical yield

0,45-0,55 m²/kg

covering time

16-48 hrs

dilution brush

ready-to-use

particle size

0,2 mm

FEATURES

- marmorino effect
- ideal for restoration works
- for all types of plaster
- high vapour permeability, class I according to UNI EN ISO 7783-2
- thickness of the equivalent air layer $S_d = 0,062$ m

CODES

Code	base	bucket (kg)
539552	0100 white	25
539584A	traditional colors - cat. A	25
539584B	trendy colors - cat. B	25



CHINO 0,7-1,2 mm

MINERAL INTONACHINO BASED ON SLAKED LME FOR INTERIOR AND EXTERIOR

Mineral finish for the decoration of internal and external surfaces with excellent breathability and resistance to the formation of mold and bacteria. Product indicated as an ideal finish for the restoration of historic centres and in interventions in the field of green building.

dilution

ready-to-use

covering time

16-48 hrs

FEATURES

- intonachino effect
- ease of application and processing
- excellent breathability
- high vapour permeability, class I according to UNI EN ISO 7783-2
- ideal finish for the restoration of historical centers and green building

CODES

Code	base	bucket (kg)
- 52	0100 white	25
- 84A	traditional colors - cat. A	25
- 84B	trendy colors - cat. B	25

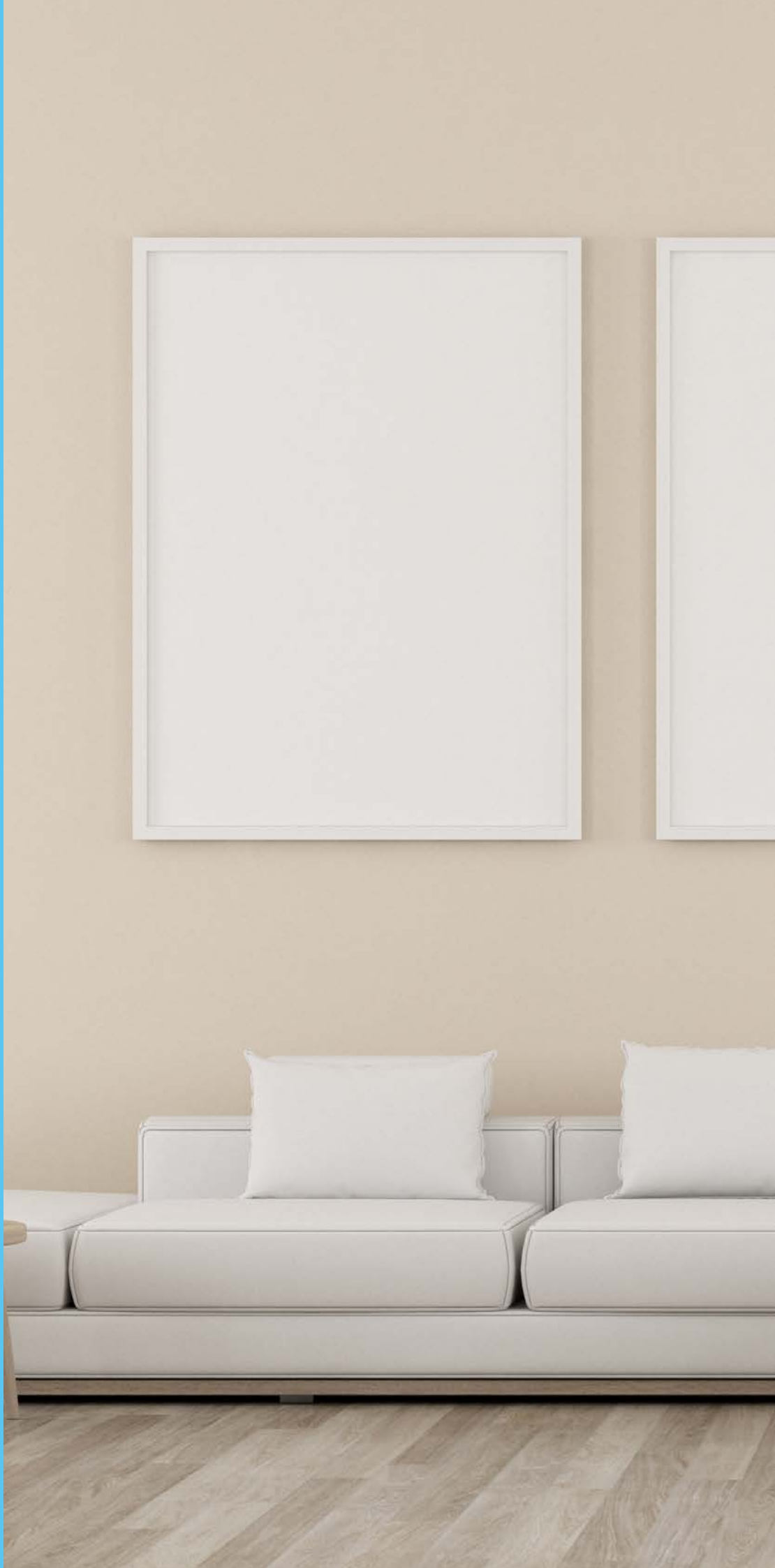
Code	particle size	theoretical yield m ² /kg	theoretical consumption kg/m ²	layers
5090	0,7	0,31-0,39	2,6-3,2	2
5290	1,2	0,40-0,45	2,2-2,5	1



The best to protect,
decorate, give
personality and make
exciting and unique the
style of our daily spaces



WASHABLE PAINTS





washable paints



NON CONTIENE SOSTANZE
DANNOSE PER LA SALUTE
FORMALDEIDE free



LEED 4.1
Compliant

HACCP
CERTIFIED

MURI ONE

MURAL ENAMEL, SUPERWASHABLE, ODOURLESS AND NON-ABSORBENT

Water-based product with excellent resistance to washing and rubbing, solvent free and low-VOC. Its characteristics of cleanability and stain removal make it specific for use in public premises, schools, offices, health facilities, bathrooms, kitchens and in environments with food where constant cleaning of surfaces is necessary.

theoretical consumption
0,12 litri/m²
per layer

dilution brush
15% with water
first layer
10% with water
second layer

theoretical yield
7,1 m²/litro
with two layers

dilution roll
5% with water

covering time
2-4 hrs

FEATURES

- high wet scrub resistance
- excellent white point
- good flow and fullness
- ideal for kitchens and bathrooms
- ideal for schools and public places
- wet scrub resistance > 10.000 washing cycles according to UNI 10560
- cleaning Class 1 according to standard UNI EN ISO 11998
- medium vapour permeability, class II according to UNI EN ISO 7783-2
- two layers covering power Class 2 according to ISO 6504-3
- thickness of the equivalent air layer Sd = 0,467 m
- VOC content < 1 g/l
- gloss:
 - < 10 gloss, (tipo matt) 25-35 gloss, (tipo satin)
 - > 60 gloss, (tipo glossy)

* the MURI ONE Satin 15 lt format will be available until stock is exhausted, to be replaced by the new 14 lt format

* the MURI ONE Glossy 15 lt format will be available until stock is exhausted, to be replaced by the new 14 lt format

NEW

CODES - MURI ONE OPACO MATT

Code	base	bucket (lt)
125600	0100 white	1 (box 6 pz)
125630	0100 white	5
125660	0100 white	14
125640A	traditional colors - cat. A	5
125670A	traditional colors - cat. A	14
125640B	trendy colors - cat. B	5
125670B	trendy colors - cat. B	14
125640C	prestige colors - cat. C	5
125670C	prestige colors - cat. C	14
tintometric base		
125635	0300 neutral	4,33
125665	0300 neutral	12,2

CODES - MURI ONE SATINATO SATIN

Code	base	bucket (lt)
125550	0100 white	5
125551	0100 white	14
125580A	traditional colors - cat. A	5
125581A	traditional colors - cat. A	14
125580B	trendy colors - cat. B	5
125581B	trendy colors - cat. B	14
125580C	prestige colors - cat. C	5
125581C	prestige colors - cat. C	14
tintometric base		
125533	0300 neutral	4,33
125531	0300 neutral	12,2

CODES - MURI ONE LUCIDO GLOSSY

Code	base	bucket (lt)
125050	0100 white	5
125051	0100 white	14
125080A	traditional colors - cat. A	5
125081A	traditional colors - cat. A	14
125080B	trendy colors - cat. B	5
125081B	trendy colors - cat. B	14
125080C	prestige colors - cat. C	5
125081C	prestige colors - cat. C	14
tintometric base		
125033	0300 neutral	4,33
125031	0300 neutral	12,2





NON CONTIENE SOSTANZE
DANNOSE PER LA SALUTE
FORMALDEIDE free



LEED 4.1
Compliant

UNO MATT

WASHABLE FINISH DEEP MATT EFFECT WITH HIGH COVERAGE

Indoor wall water paint with a deep, non-reflecting matt effect, highly covering, very white and washable, solvent-free, formaldehyde-free and with very low levels of VOC. Particularly suitable for plaster wall supports, difficult surfaces such as plasterboard, suitably prepared, and plaster shaving, where a high quality ultra matt finish is required.

theoretical consumption

0,12 litri/m²
per layer

dilution brush

10-15% with water

theoretical yield

5,5-6,5 m²/liter
with two layers

dilution roll

3-5% with water

covering time

2-4 hrs

FEATURES

- ultra matt covering look
- does not reflect electric light
- high point of white
- wet scrub resistance > 7.000 washing cycles according to UNI 10560
- cleaning Class 2 according to standard UNI EN ISO 11998
- covering power with 2 coats according to ISO 6504-3
- high vapour permeability, class I according to UNI EN ISO 7783-2
- thickness of the equivalent air layer $S_d = 0,072$ m

CODES

Code	base	bucket (lt)
124100	0100 white	0,75 (box 6 pz)
124102	0100 white	5
124105	0100 white	14
124104A	traditional colors - cat. A	5
124107A	traditional colors - cat. A	14
124104B	trendy colors - cat. B	5
124107B	trendy colors - cat. B	14
124104C	prestige colors - cat. C	5
124107C	prestige colors - cat. C	14
<i>tintometric base</i>		
124101	0300 neutral	0,675
124103	0300 neutral	4,5
124106	0300 neutral	12,6





NON CONTIENE SOSTANZE
DANNOSE PER LA SALUTE
FORMALDEIDE free



LEED 4.1
Compliant

POWER LUX

WASHABLE FINISH FOR PLASTERBOARD WITH VERY HIGH COVERAGE

Wall water paint free of solvents and formaldehyde, with very low levels of VOC, high coverage, opacity and masking power, high white point and washability. Particularly suitable for wall supports and difficult surfaces such as properly prepared plasterboard and smooth finishing. It allows a good coverage already with one coat.

theoretical consumption
0,12 litri/m²
per layer

theoretical yield
5 m²/liter
with two layers

covering time
2-4 hrs

dilution brush
10-15% with water
first layer
3-5% with water
second layer

dilution roll
15% with water

FEATURES

- plasterboard finish
- high point of white
- high coverage
- excellent resistance to washing
- wet scrub resistance > to UNI 10560
- cleaning Class 2 according to standard UNI EN ISO 11998
- two coats covering power Class 1 according to ISO 6504-3
- high vapour permeability, class I according to UNI EN ISO 7783-2
- thickness of the equivalent air layer Sd = 0,072 m
- suitable for all types of fine finishing plasters

CODES

Code	base	bucket (lt)
124073	0100 white	5
124071	0100 white	14
124074A	traditional colors - cat. A	5
124072A	traditional colors - cat. A	14





NON CONTIENE SOSTANZE
DANNOSE PER LA SALUTE
FORMALDEIDE free



LEED 4.1
Compliant

UNO LAVABILE

SUPER-COVERING HIGHLY WASHABLE PAINT

Finishing product with excellent resistance to washing and rubbing. Gives the support excellent coverage and an opaque appearance. Solvent and formaldehyde free, with low VOC. Allows you to obtain quality decorative finishes with multiple shades.

theoretical consumption

0,10 litri/m²
per layer

theoretical yield

5 m²/liter
with two layers

covering time

2-4 hrs

dilution brush

30% with water
first layer
25% with water
second layer

dilution roll

15% with water

FEATURES

- matt appearance
- excellent selection of colours
- excellent white point and coverage
- excellent resistance to rubbing and washing
- ease of application
- wet scrub resistance > 7.000 washing cycles according to UNI 10560
- cleaning Class 2 according to standard UNI EN ISO 11998
- two coats covering power Class 1 according to ISO 6504-3
- high vapour permeability, class I according to UNI EN ISO 7783-2
- thickness of the equivalent air layer Sd = 0,052 m
- suitable for all types of fine finishing plaster
- suitable for rooms with high quality finishes
- colorable with all NCS colors

CODES

Code	base	bucket (lt)
124070	0100 white	0,75 (box 6 pz)
124050	0100 white	5
124051	0100 white	14
124080A	traditional colors - cat. A	5
124081A	traditional colors - cat. A	14
124080B	trendy colors - cat. B	5
124081B	trendy colors - cat. B	14
124080C	prestige colors - cat. C	5
124081C	prestige colors - cat. C	14
tintometric base		
124060	0300 neutral	0,675
124045	0300 neutral	4,5
124053	0300 neutral	12,6





NON CONTIENE SOSTANZE
DANNOSE PER LA SALUTE
FORMALDEIDE free



**LEED 4.1
Compliant**

UNO TEX

OPAQUE WASHABLE BREATHABLE PAINT FOR INTERIOR

Water-based painting with high coverage, opacity, whiteness and dilation characteristics. Solvent and formaldehyde free with low VOC.

Gives the support aesthetic results of very high quality, easily applicable and with good resistance to cleanability. Adequately opaque and velvety, it is suitable to paint and elegantly realize all the walls of the house.

**theoretical
consumption**
0,10 litri/m²
per layer

theoretical yield
5 m²/liter
with two layers

covering time
2-4 hrs

dilution brush
30% with water
first layer
25% with water
second layer

dilution roll
15% with water

FEATURES

- excellent coverage
- practical oval bucket
- matt appearance
- wet scrub resistance > 1.000 washing cycles, according to UNI 10560
- cleaning Class 3 according to standard UNI EN ISO 11998
- two coats covering power Class 2 according to standard ISO 6504-3
- high vapour permeability, class I according to UNI EN ISO 7783-2
- thickness of the equivalent air layer Sd = 0,061 m
- ideal for home interior finishes

CODES

Code	base	bucket (lt)
126050	0100 white	5
126051	0100 white	14
126080A	traditional colors - cat. A	5
126081A	traditional colors - cat. A	14



The unique technology
to enjoy the most of the
interior spaces.
A complete line,
formulated to combat
moisture and mildew
and sanitise any
environment.



**COMFORT &
BENESSERE**



comfort & benessere





NON CONTIENE SOSTANZE
DANNOSE PER LA SALUTE
FORMALDEIDE free



**LEED 4.1
Compliant**

ESATHERM

MOLD-RESISTANT, REFLECTIVE, ANTI-CONDENSATION PAINT

Washable, opaque and breathable indoor finish with hollow glass microspheres, containing a wide-spectrum biocide mixture, solvent and formaldehyde free, low VOC. Reduces heat exchange between the environment and the substrate, preventing condensation and mould. Suitable for damp and poorly ventilated rooms with condensation. Ideal for bathrooms and kitchens.

theoretical consumption

0,12 litri/m²
per layer

theoretical yield

3,3 m²/liter
with two layers

covering time

2-4 hrs

dilution brush

10-15% with water

dilution roll

3-5% with water

FEATURES

- Insulating and anti-condensation effect
- anti-mould
- breathable
- wet scrub resistance > 1.000 washing cycles, according to UNI 10560
- cleaning Class 3 according to standard UNI EN ISO 11998
- two coats covering power Class 1 according to standard ISO 6504-3
- high vapour permeability, class I according to UNI EN ISO 7783-2
- thickness of the equivalent air layer $S_d = 0,079$ m
- VOC content < 1 g/l
- suitable for humid and poorly ventilated rooms

CODES

Code	base	bucket (lt)
623350	0100 white	5
623351	0100 white	14
623380A	traditional colors - cat. A	5
623381A	traditional colors - cat. A	14





UNO NEXT

OPAQUE ANTI-MOULD WASHABLE PAINT

Washable opaque covering wall paint containing a wide-spectrum biocide mixture that counteracts the engraftment and proliferation of mold, fungi and yeasts. The product confers a preventive action for surface protection and cleaning. Solvent and formaldehyde free with low VOC.

theoretical consumption

0,12 litri/m²
per layer

theoretical yield

3,3 m²/liter
with two layers

covering time

2-4 hrs

dilution brush

10-15% with water

dilution roll

3-5% with water

FEATURES

- Prevents the proliferation of mould and micro-organisms
- Very good resistance to scrubbing and washing
- Matt look
- High coverage
- Anti-mould effect
- Breathable
- wet scrub resistance > 5.000 washing cycles, according to UNI 10560
- cleaning Class 2 according to standard UNI EN ISO 11998
- two coats covering power Class 1 according to standard ISO 6504-3
- thickness of the equivalent air layer Sd = 0,062 m
- suitable for humid and poorly ventilated rooms

CODES

Code	base	bucket (lt)
124110	0100 white	5
124113	0100 white	14
124112A	traditional colors - cat. A	5
124115A	traditional colors - cat. A	14
124112B	trendy colors - cat. B	5
124115B	trendy colors - cat. B	14
124112C	prestige colors - cat. C	5
124115C	prestige colors - cat. C	14
<i>tintometric base</i>		
124111	0300 neutral	4,5
124114	0300 neutral	12,6





NON CONTIENE SOSTANZE
DANNOSE PER LA SALUTE
FORMALDEIDE free



**LEED 4.1
Compliant**

FILM PROPTECH

ANTI-MOULD OPAQUE BREATHABLE PAINT

Opaque, breathable and covering paint containing a broad-spectrum biocide mixture that counteracts the build-up and proliferation of mould and fungi. Solvent and formaldehyde free with low VOC

theoretical consumption

0,10 litri/m²
per layer

theoretical yield

5 m²/liter
with two layers

covering time

2-4 hrs

dilution brush

30% with water
first layer
25% with water
second layer

dilution roll

15% with water

FEATURES

- Provides resistance to moulds and micro-organisms proliferation
- Excellent breathability and covering
- Matt look
- high vapour permeability, class I according to UNI EN ISO 7783-2
- two coats covering power Class 1 according to standard ISO 6504-3
- thickness of the equivalent air layer $S_d = 0,052$ m
- suitable for all types of plasters
- suitable for damp environments

CODES

Code	base	bucket (lt)
123650	0100 white	5
123651	0100 white	14
123680A	traditional colors - cat. A	5
123681A	traditional colors - cat. A	14





SEI KO

DETERGENT SOLUTION FOR CLEANING AREAS WITH EFFLORESCENCES AND ALGAE

Concentrated solution with oxidizing action, suitable for cleaning, removal, elimination of molds, algae and plant efflorescences. Extremely effective and easy to apply even on dark spots, the whitening action is achieved in a very short time.

theoretical consumption
0,5 litri/m²

theoretical yield
11 m²/liter

dilution
ready-to-use

covering time
8-10 ore

FEATURES

- oxidant for algae and vegetable efflorescences
- ease of application thanks to spray dispenser
- content of active chlorine > 4%
- immediate whitening action

CODES

Code	base	bucket (lt)
612207	0000 transparent	0,75 (scatola 12 pz)
612210	0000 transparent	10



SEI OK

SANITIZING AND REPARATOR SOLUTION FOR INTERIOR AND EXTERIOR WALLS

Solution composed of special chemical agents with broad spectrum of action that prevent the formation of mould, fungus and algae. It is used to repair the surface before painting. The high penetration in the support favors the long duration of its sanitizing action.

theoretical consumption
0,09 litri/m²

theoretical yield
11 m²/liter

dilution
ready-to-use

covering time
24-48 ore

FEATURES

- sanitizing effect against mould and algae
- high penetration on the surface
- long lasting action

CODES

Code	base	bucket (lt)
611001	0000 transparent	1 (box 6 pz)

The best to protect,
decorate, give
personality and make
exciting and unique the
style of our daily spaces,
whether it is home or
work.



TRANSPIRING PAINTS



A modern living room interior with a teal sofa, a white coffee table, a floor lamp, and a potted plant. The room has light-colored walls and a light wood floor. A blue banner is overlaid on the right side of the image.

transpiring paints



UNO TRASPIRA

HIGH-COVERAGE, BREATHABLE PAINT

Opaque breathable water based paint easily applicable and with excellent coverage and expansion. Its characteristics give the support high quality aesthetic results. Solvent and formaldehyde free with low VOC content.

theoretical consumption

0,10 litri/m²
per layer

theoretical yield

5 m²/liter
with two layers

covering time

2-4 hrs

dilution brush

30% with water
first layer
25% with water
second layer

dilution roll

15% with water

FEATURES

- excellent breathability
- Matt look
- excellent coverage and white point
- good cleaning ability
- two coats covering power Class 1 according to standard ISO 6504-3
- high vapour permeability, class I according to UNI EN ISO 7783-2
- VOC content < 1 g/l
- thickness of the equivalent air layer Sd = 0,052 m
- ideal for homes interior finishes

CODES

Code	base	bucket (lt)
123070	0100 white	0,75 (box 6 pz)
123050	0100 white	5
123051	0100 white	14
123080A	traditional colors - cat. A	5
123081A	traditional colors - cat. A	14





NON CONTIENE SOSTANZE
DANNOSE PER LA SALUTE
FORMALDEIDE free

UNO SMART

EXTRA WHITE QUICK-DRYING BREATHABLE PAINT

Breathable product at very high point of white, good coverage and opacity, suitable for interior wall surfaces. Its easy application and quick drying allow speed in the execution of painting. Solvents and formaldehyde free with low VOC.

theoretical consumption 0,10 litri/m ² per layer	theoretical yield 5 m ² /liter with two layers	covering time 1-2 hrs
dilution brush 30% with water first layer 25% with water second layer	dilution roll 15% with water	

FEATURES

- excellent breathability
- good white point
- quick drying
- good coverage
- Matt look
- two coats covering power Class 1 according to standard ISO 6504-3
- high vapour permeability, class I according to UNI EN ISO 7783-2
- thickness of the equivalent air layer Sd = 0,052 m

CODES

Code	base	bucket (lt)
123040	0100 white	14



NON CONTIENE SOSTANZE
DANNOSE PER LA SALUTE
FORMALDEIDE free

UNICO

COVERING AND HIGHLY BREATHABLE PAINT

Breathable matt finish for interior wall surfaces, solvent and formaldehyde free with low VOC content. With good expansion, excellent coverage and white point.

theoretical consumption 0,11 litri/m ² per layer	theoretical yield 4,5 m ² /liter with two layers	covering time 2-4 hrs
dilution brush 30% with water first layer 25% with water second layer	dilution roll 15% with water	

FEATURES

- Matt look
- good fullness and coverage
- excellent breathability
- good white point
- two coats covering power Class 1 according to standard ISO 6504-3
- high vapour permeability, class I according to UNI EN ISO 7783-2
- thickness of the equivalent air layer Sd = 0,049 m
- VOC content < 1 g/l
- suitable for all types of plasters

CODES

Code	base	bucket (lt)
122550	0100 white	5
122551	0100 white	14



NON CONTIENE SOSTANZE
DANNOSE PER LA SALUTE
FORMALDEIDE free

UNO LIGHT

BREATHABLE AND COVERING PAINT FOR PROFESSIONAL USE

White, breathable wall paint with excellent coverage. It ensures a fine uniform and opaque appearance to the surfaces

theoretical consumption
0,12 litri/m²
per layer

theoretical yield
4,2 m²/liter
with two layers

covering time
2-4 hrs

dilution brush
30% with water
first layer
25% with water
second layer

dilution roll
15% with water

FEATURES

- Matt look
- good white point
- excellent breathability
- ease of application
- two coats covering power Class 1 according to standard ISO 6504-3
- high vapour permeability, class I according to UNI EN ISO 7783-2
- thickness of the equivalent air layer $S_d = 0,049$ m
- suitable for all types of plasters

CODES

Code	base	bucket (lt)
120541	0100 white	14



NON CONTIENE SOSTANZE
DANNOSE PER LA SALUTE
FORMALDEIDE free

UNO FAST

PROFESSIONAL INDOOR PAINT

Finishing product supplied in tank for application on internal surfaces of prefab, warehouses and large environments. Excellent coverage and fullness with homogeneous and opaque appearance. Solvent and formaldehyde free with low VOC.

theoretical consumption
0,11 litri/m²
per layer

theoretical yield
brush and roll
4,5 m²/litro with two layers
spray or airless
2,5 m²/litro

dilution brush
ready-to-use

covering time
2-4 hrs

FEATURES

- Matt look
- good fullness and coverage
- excellent breathability
- ease of application ad airless e spruzzo
- two coats covering power Class 1 according to standard ISO 6504-3
- high vapour permeability, class I according to UNI EN ISO 7783-2
- thickness of the equivalent air layer $S_d = 0,049$ m
- ready-to-use in tank

CODES

Code	base	bucket (lt)
122586	0100 white	1000

NOTE

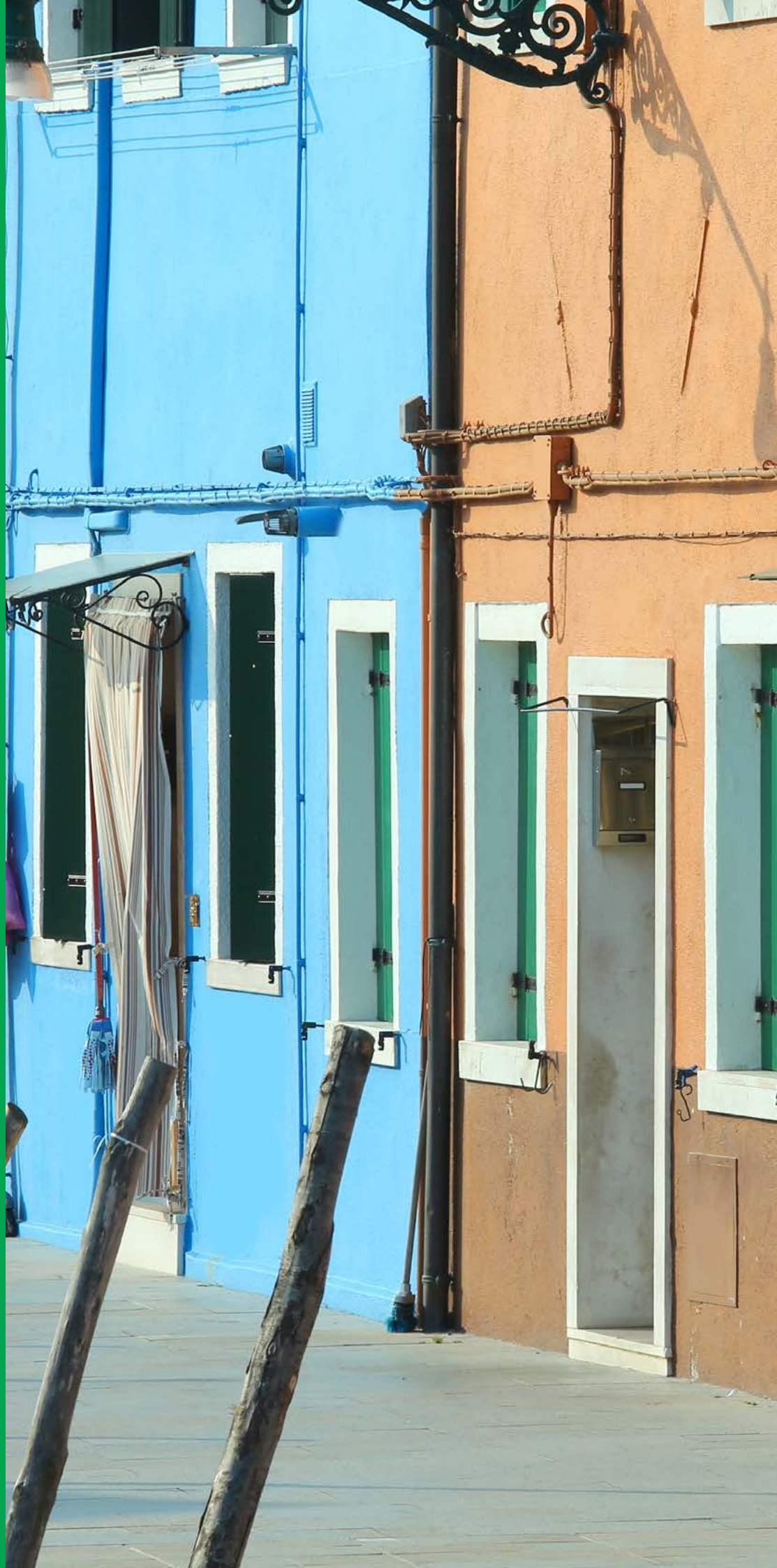
On request, we can supply the following range of water-based paints: Washable - Transpiring - Anti-mold in tanks of 1000 l, exclusively white. For information contact our Technical Assistance service.



Paints and finishes ideal to respond with professionalism and reliability to the needs of existing and modern buildings. Products of quality, formulated to simplify laying operations, ensuring results of excellence and durability in time.



**PAINTS FOR
EXTERIORS**





paints and colored finishes for exteriors



XILAN DUEL - SILICONHARZFARBE

SILOXANE ANTI-ALGAE, SMOOTH AND HIGHLY WATER-REPELLENT FINISH

High quality siloxane water paint suitable for the protection and decoration of new and old buildings. With excellent water repellency and breathability, suitable to be used as finish on dehumidifying plasters in sanitation systems. Contains a special innovative microencapsulated biocide technology for excellent protection against microbiological proliferation and deterioration.

theoretical consumption 0,10 litri/m ² per layer	theoretical yield 5 m ² /liter with two layers	covering time 6-8 hrs
dilution brush 25% with water first layer 20% with water second layer	dilution roll 10% with water	

FEATURES

- High protection against mould and algae
- finishing suitable for dehumidifying plasters
- high wet scrub resistance, to weather and UV rays
- excellent breathability and water repellence
- water absorption W24 = 0,085 Kg/m² h^{0.5}
- wet scrub resistance > 10.000 wash cycles, certified according to UNI 10560
- permeability to vapor Sd = 0,058 m (class C1 > 50 m)

CODES

Code	base	bucket (lt)
236151	0100 white	15
236181A	traditional colors - cat. A	15
236181B	trendy colors - cat. B	15
236181C	prestige colors - cat. C	15
	tintometric base	
236153	0300 neutral	13,5



XIL2 FILL

ACRYL-SILOXANE ANTI-ALGAE, PROTECTIVE AND FILLING FINISH

High coverage and filling acrylic-siloxane finish for protection and decoration. With excellent permeability, water repellency, excellent resistance to atmospheric agents and UV rays. Contains a special innovative microencapsulated biocide technology for excellent protection against microbiological proliferation and deterioration.

theoretical consumption 0,11 litri/m ² per layer	theoretical yield 4,5 m ² /liter with two layers	covering time 6-8 hrs
dilution brush 30% with water first layer 25% with water second layer	dilution roll 15% with water	

FEATURES

- high wet scrub resistance, to weather and UV rays
- protection against algae and mold
- excellent breathability and water repellence
- excellent coverage
- high vapour permeability, class I according to UNI EN ISO 7783-2
- thickness of the equivalent air layer Sd = 0,055 m

CODES

Code	base	bucket (lt)
236641	0100 white	5
236651	0100 white	15
236680A	traditional colors - cat. A	5
236681A	traditional colors - cat. A	15
236680B	trendy colors - cat. B	5
236681B	trendy colors - cat. B	15
236680C	prestige colors - cat. C	5
236681C	prestige colors - cat. C	15
	tintometric base	
236640	0300 neutral	4,5
236653	0300 neutral	13,5



UNI-KA 2.0

ACRIL-SILOXANE STRUCTURAL AND COVERING FINISH WITH ANTI-ALGAE

Smooth and filling high-coverage acrylic-siloxane finish suitable for protection and decoration outside. Used in paint cycles to improve the back surface. Contains a special innovative microencapsulated biocide technology for excellent protection against microbiological proliferation and deterioration.

theoretical consumption 0,11 litri/m ² per layer	theoretical yield 4,5 m ² /liter with two layers	covering time 6-8 hrs
dilution brush 30% with water first layer 25% with water second layer	dilution roll 15% with water	particle size ca. 0,3 mm

FEATURES

- filling and structural effect
- high resistance to weathering and uv rays
- excellent water repellence
- excellent coverage
- protection against algae and mold
- high vapour permeability, class I according to UNI EN ISO 7783-2
- thickness of the equivalent air layer Sd = 0,082 m

CODES

Code	base	bucket (lt)
237050	0100 white	5
237051	0100 white	15
237080A	traditional colors - cat. A	5
237081A	traditional colors - cat. A	15
237080B	trendy colors - cat. B	5
237081B	trendy colors - cat. B	15
237080C	prestige colors - cat. C	5
237081C	prestige colors - cat. C	15
	tintometric base	
237040	0300 neutral	4,5
237041	0300 neutral	14



BIS

This article will be soon out of stock and not replaced

ACRYL-SILOXANE ANTI-ALGAE STRUCTURAL FINISH WITH MEDIUM GRAIN SIZE

Suitable for protection and decoration of surfaces hard to cover and regulate. High-filling finish also used as intermediate coating for siloxane finishing cycles.

theoretical consumption 0,14 litri/m ² per layer	theoretical yield 3,6 m ² /liter with two layers	covering time 6-8 hrs
dilution brush 30% with water first layer 25% with water second layer	dilution roll 15% with water	

FEATURES

- Suitable for dehumidified plasters
- high wet scrub resistance, to weather and UV rays
- excellent breathability and water repellence
- water absorption W24 = 0,085 Kg/m² h 0,5
- wet scrub resistance > 10.000 wash cycles, certified according to UNI 10560
- permeability to vapor Sd = 0,058 m (class C1 > 50 m)

CODES

Code	base	bucket (lt)
237151	0100 white	15
237181A	traditional colors - cat. A	15
237181B	trendy colors - cat. B	15
237181C	prestige colors - cat. C	15
	tintometric base	
237141	0300 neutral	14



BETON-ONE

PROTECTIVE ANTI-ALGAE, ANTICARBONATION AND WATER REPELLENT FINISH

Water-repellent and covering acrylic finish specific for application on concrete, cement and fibre cement surfaces. It has a barrier against the passage of carbon dioxide and is highly protective and resistant to atmospheric agents and UV rays. Contains a special innovative microencapsulated biocide technology for excellent protection against microbiological proliferation and deterioration.

theoretical consumption 0,08 litri/m ² per layer	theoretical yield 6,2 m ² /liter with two layers	covering time 6-8 hrs
dilution brush 20% with water first layer 15% with water second layer	dilution roll 5% with water	

FEATURES

- excellent adhesion on smooth and cementitious surfaces
- anticarbonation barrier
- protection against algae and mold
- suitable as anticarbonation barrier according to UNI EN 1062-6:2003
- permeability to CO₂ Sd = 347,95 m (class C1 > 50 m).
- wet scrub resistance > 10.000 wash cycles
- excellent water repellence

CODES

Code	base	bucket (lt)
137551	0100 white	15
137581A	traditional colors - cat. A	15
137581B	trendy colors - cat. B	15
137581C	prestige colors - cat. C	15
	tintometric base	
137531	0300 neutral	13



UNO FILL

ACRYLIC PROTECTIVE FILLING FINISH WITH ANTI ALGAE

High coverage finishing paint suitable for outdoor applications, both on new buildings and in urban renovation works. Contains a special innovative microencapsulated biocide technology for excellent protection against microbiological proliferation and deterioration.

theoretical consumption 0,11 litri/m ² per layer	theoretical yield 4,5 m ² /liter with two layers	covering time 6-8 hrs
dilution brush 20% with water first layer 15% with water second layer	dilution roll 5% with water	

FEATURES

- high resistance to weathering and uv rays
- excellent water repellence
- excellent coverage
- protection against algae and mold
- wide range color selection
- high vapour permeability, class I according to UNI EN ISO 7783-2
- thickness of the equivalent air layer Sd = 0,082 m
- suitable for all types of exterior plasters
- for fine outdoor finishes

CODES

Code	base	bucket (lt)
136056	0100 white	5
136051	0100 white	15
136080A	traditional colors - cat. A	5
136081A	traditional colors - cat. A	15
136080B	trendy colors - cat. B	5
136081B	trendy colors - cat. B	15
136080C	prestige colors - cat. C	5
136081C	prestige colors - cat. C	15
	tintometric base	
136057	0300 neutral	4,5
136053	0300 neutral	13,5



QUARZ-ONE

FINE QUARTZ FILLING AND COVERING FINISH

Acrylic micro-coating with excellent filling and covering power, high resistance to alkali, atmospheric agents, UV rays and wet scrubbing. Suitable for the protection and decoration of new buildings and renovation works in urban construction.

theoretical consumption

0,12 litri/m²
per layer

theoretical yield

4,1 m²/liter
with two layers

covering time

6-8 hrs

dilution brush

30% with water
first layer
25% with water
second layer

dilution roll

15% with water

FEATURES

- high wet scrub resistance
- high resistance to weathering and uv rays
- high vapour permeability, class I according to UNI EN ISO 7783-2
- thickness of the equivalent air layer Sd = 0,076 m

CODES

Code	base	bucket (lt)
136550	0100 white	5
136551	0100 white	15
136580A	traditional colors - cat. A	5
136581A	traditional colors - cat. A	15
136580B	trendy colors - cat. B	5
136581B	trendy colors - cat. B	15
136580C	prestige colors - cat. C	5
136581C	prestige colors - cat. C	15
tintometric base		
136533	0300 neutral	4,5
136553	0300 neutral	13,5



UNI-KA

This article will be soon out of stock and not replaced

ANTI-ALGAE, STRUCTURAL FINISH WITH AVERAGE PARTICLE SIZE

Suitable for uneven and difficult to cover surfaces or where you want to reproduce fine plastering effect. The ease of application and high filling power give regularity to the surface.

theoretical consumption

0,14 litri/m²
per layer

theoretical yield

3,6 m²/liter
with two layers

covering time

6-8 hrs

dilution brush

30% with water
first layer
25% with water
second layer

dilution roll

15% with water

particle size

ca. 0,3 mm

FEATURES

- filling and structural effect
- protection against algae and mold
- high resistance to weathering and uv rays
- high vapour permeability, class I according to UNI EN ISO 7783-2
- thickness of the equivalent air layer Sd = 0,075 m
- can be used in the pretreatment of surfaces difficult to cover or uneven

CODES

Code	base	bucket (lt)
137050	0100 white	5
137051	0100 white	15
137050A	traditional colors - cat. A	5
137081A	traditional colors - cat. A	15
137050B	trendy colors - cat. B	5
137081B	trendy colors - cat. B	15
137050C	prestige colors - cat. C	5
137081C	prestige colors - cat. C	15
tintometric base		
137040	0300 neutral	4,5
137041	0300 neutral	14



ELAS-TER FILL

ELASTOMERIC ACRYL-SILOXANE FILLING FINISH WITH ANTI ALGAE

Excellent elasticity even at low temperatures and reduced retention to dirt. It has a high covering and filling power thanks to which it evens out and covers the small irregularities of wall surfaces.

Contains a special innovative microencapsulated biocide technology for excellent protection against microbiological proliferation and deterioration.

theoretical consumption 0,13 litri/m ² per layer	theoretical yield 3,8 m ² /liter with two layers	covering time 6-8 hrs
dilution brush 15% with water first layer 10% with water second layer	dilution roll 5% with water	

FEATURES

- high elasticity
- excellent coverage
- high water repellence
- high resistance to weathering and UV rays
- medium vapour permeability, class II according to UNI EN ISO 7783-2
- wet scrub resistance > 10.000 wash cycles
- Anti-algae elastomeric with selected mineral fillers

CODES

Code	base	bucket (lt)
336251	0100 white	15
336284A	traditional colors - cat. A	15
336284B	trendy colors - cat. B	15
336284C	prestige colors - cat. C	15
	tintometric base	
336253	0300 neutral	13,5



SIL4 BIO - SILIKATFARBE

SILICATE SMOOTH MINERAL ECO-PAINT FOR INDOOR AND OUTDOOR

Mineral finish based on potassium silicate that has excellent breathability combined with good water repellence. It has an aesthetic and chromatic appearance similar to the ancient coloured plasters.

theoretical consumption 0,13 litri/m ² per layer	theoretical yield 3,8 m ² /liter with two layers	covering time 6-8 hrs
dilution brush 15% with water first layer 10% with water second layer	dilution roll 5% with water	

FEATURES

- Mineral matt look
- good resistance to weather
- excellent breathability
- good water repellence
- high vapour permeability, class I according to UNI EN ISO 7783-2
- thickness of the equivalent air layer Sd = 0,058 m
- compliance with standard DIN 18363 point 2.4.6

CODES

Code	base	bucket (lt)
436351	0100 white	15
436381A	traditional colors - cat. A	15
436381B	trendy colors - cat. B	15
436381C	prestige colors - cat. C	15
	tintometric base	
436353	0300 neutral	13,5



REP 6

SILOXANE ODOUR-FREE SOLVENT-BASED AND TRANSPARENT WATER-REPELLENT

Product based on polysiloxane resins, in odourless solvent solution, non-filmogenic, with excellent breathability and water repellency for the treatment of bricks, stones, etc. Leaves the appearance of the support unchanged over time.

theoretical consumption

0,30 litri/m²
on cement

theoretical yield

2,5-4 m²/liter
concrete
1,3-2 m²/liter
mineral plaster
0,7-5 m²/liter
natural stones
1,3-2,5 m²/liter
bricks

dilution brush

ready-to-use

FEATURES

- non film-forming
- excellent water repellence
- unaltered substrate transpirability
- does not alter the appearance of support
- excellent protection of support over time

CODES

Code	base	bucket (lt)
636650	0000 transparent	5
636625	0000 transparent	25



DROP 6

SILOXANE TRANSPARENT WATER REPELLENT

Water-strengthening protective product containing polysiloxanes, non-filmogenic, with excellent breathability and water repellency for the treatment of bricks, stones, etc. Leaves the appearance of the support unchanged over time.

theoretical consumption

0,30 litri/m²
on cement

theoretical yield

2,5-4 m²/liter
concrete
1,3-2 m²/liter
mineral plaster
0,7-5 m²/liter
natural stones
1,3-2,5 m²/liter
bricks

dilution brush

ready-to-use

FEATURES

- inodore
- non film-forming
- excellent water repellence
- unaltered substrate transpirability
- does not alter the appearance of support
- excellent protection of support over time

CODES

Code	base	bucket (lt)
636600	0000 transparent	10

Thermal Insulation coatings, thermoplasters, armed shaving and any plastered surface, all of them can be coated with arteMURI Intonachino coats. They are supplied coloured ready-to-use, fibrereinforced, with particular water dispersion biocidal product and innovative technology of microencapsulation of active substance. The products are distinguished from each other by the binding system and for the aesthetic rendering.



COATINGS





coatings



XIL2 INTO - SILICONHARZPUTZ K

SILOXANE ANTI-ALGAE, HIGHLY WATER REPELLENT COATING

High performance siloxane finish with compact effect, fibre reinforced and available in various granulometries thickness. Suitable for use on historic facades, new buildings and restoration plasters, where excellent water repellence, high protection, resistance to atmospheric agents and excellent vapour permeability are required.

Contains a special innovative microencapsulated biocide technology for excellent protection against microbiological proliferation and deterioration.

dilution

ready-to-use

covering time

16-48 hrs

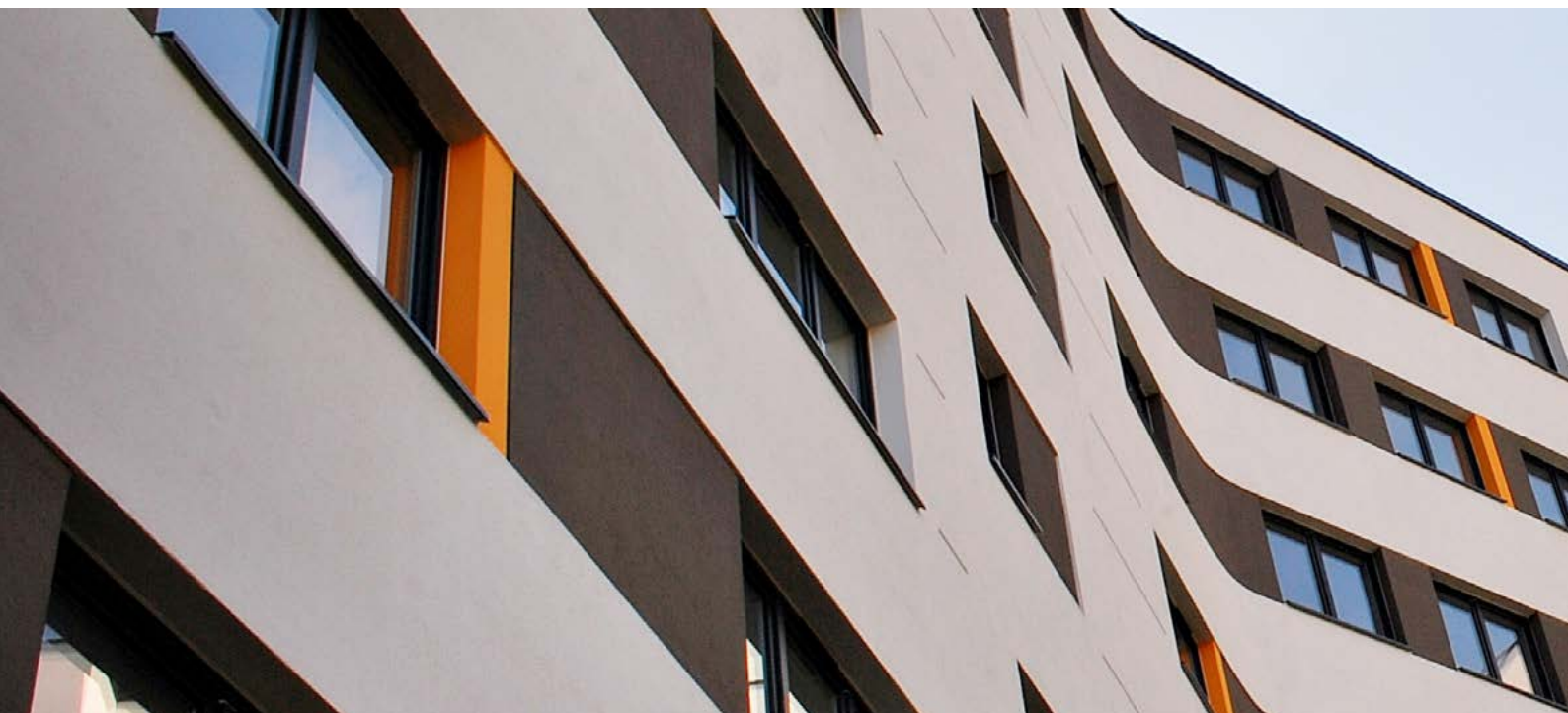
FEATURES

- protection against algae and mold
- intonachino effect
- various grain size
- ease of application
- excellent water repellence and breathability
- high vapour permeability, class I according to UNI EN ISO 7783-2
- thickness of the equivalent air layer $S_d = 0,100$ m
- siloxane suitable for all types of plaster and exterior

CODES

Code	base	bucket (kg)	
- 52	0100 white	25	
- 84A	traditional colors - cat. A	25	
- 84B	trendy colors - cat. B	25	
- 84C	prestige colors - cat. C	25	
	particle size	tintometric base	
237642	0,7	0300 neutral	24
237842	1		
238042	1,2		
238242	1,5		
238442	2		
238642	3		
237652	0,7	0100 white	25
237852	1		
238052	1,2		
238252	1,5		
238452	2		
238652	3		

Code	particle size	theoretical yield m ² /kg	theoretical consumption kg/m ²	layers
2376	0,7	0,31-0,39	2,6-3,2	2
2378	1	0,50-0,60	1,7-2,0	1
2380	1,2	0,40-0,45	2,2-2,5	1
2382	1,5	0,30-0,35	2,8-3,2	1
2384	2	0,28-0,33	3,0-3,5	1
2386	3	0,25-0,28	3,6-4,0	1





ETA 13/0001



DUE SI

ACRYL-SILOXANE ANTI ALGAE COMPACT COATING

Thick acryl-siloxane product, available in various granulometries and fiber-reinforced with high resistance to atmospheric agents. It also has excellent water repellence and vapour permeability. Contains a special innovative microencapsulated biocide technology for excellent protection against microbiological proliferation and deterioration.

dilution
ready-to-use

covering time
16-48 hrs

FEATURES

- protection against algae and mold
- intonachino effect
- various grain size
- excellent breathability
- good water repellence
- high vapour permeability, class I according to UNI EN ISO 7783-2
- thickness of the equivalent air layer $S_d = 0,114 \text{ m}$
- acryl-siloxane suitable for all types of plaster and exterior

CODES

Code	base	bucket (kg)
- 52	0100 white	25
- 84A	traditional colors - cat. A	25
- 84B	trendy colors - cat. B	25
- 84C	prestige colors - cat. C	25
	particle size	tintometric base
239042	1	0300 neutral
239242	1,2	
239442	1,5	
239642	2	
239848	3	0100 white
239052	1	
239252	1,2	
239452	1,5	
239652	2	25
239852	3	

Code	particle size	theoretical yield m^2/kg	theoretical consumption kg/m^2	layers
2390	1	0,50-0,60	1,7-2,0	1
2392	1,2	0,40-0,45	2,2-2,5	1
2394	1,5	0,30-0,35	2,8-3,2	1
2396	2	0,28-0,33	3,0-3,5	1
2398	3	0,25-0,28	3,6-4,0	1





ETA 13/0001



ONE COAT - KUNSTHARZPUTZ K

ACRYLIC COMPACT ANTI ALGAE COATING

Fiber-reinforced thick finishing product with a full and compact appearance available in different granulometries. Suitable for protection and decoration outside.

Contains a special innovative microencapsulated biocide technology for excellent protection against microbiological proliferation and deterioration.

dilution

ready-to-use

covering time

16-48 hrs

FEATURES

- intonachino effect
- various grain size
- protection against algae and mold
- high resistance to weathering and UV rays
- medium vapour permeability, class II according to UNI EN ISO 7783-2
- thickness of the equivalent air layer $S_d = 0,228$ m

CODES

Code		base	bucket (kg)
237652	0,7	0100 white	25
237852	1		
238052	1,2		
238252	1,5		
238452	2		
238652	3		
- 84A		traditional colors - cat. A	25
- 84B		trendy colors - cat. B	25
- 84C		prestige colors - cat. C	25
	particle size	tintometric base	
237642	0,7	0300 neutral	24
237842	1		
238042	1,2		
238242	1,5		
238442	2		
238642	3		

Code	particle size	theoretical yield m ² /kg	theoretical consumption kg/m ²	layers
1385	0,7	0,31-0,39	2,6-3,2	2
1387	1	0,50-0,60	1,7-2,0	1
1390	1,2	0,40-0,45	2,2-2,5	1
1390	1,5	0,30-0,35	2,8-3,2	1
1393	2	0,28-0,33	3,0-3,5	1
1395	3	0,25-0,28	3,6-4,0	1



ELAS-TER

ELASTOMERIC COMPACT COATING WITH ANTI ALGAE

Elastic finish with fiber-reinforced thickness with various granulometries, with excellent elasticity even at low temperatures, excellent protection and water repellence.

dilution

ready-to-use

covering time

16-48 hrs

FEATURES

- intonachino effect
- excellent water repellence
- high elasticity
- bassa permeabilità all'acqua liquida, classe III secondo UNI EN 1062-3

* Available only on request

Minimum order for white or colored product:
minimum batch 33 buckets - 25 kg

CODES

Code		base	bucket (kg)
- 52		0100 white	25
- 84A		traditional colors - cat. A	25
- 84B		trendy colors - cat. B	25
- 84C		prestige colors - cat. C	25

Code	particle size	theoretical yield m ² /kg	theoretical consumption kg/m ²	layers
3378	1,2*	0,45-0,55	2,2-2,5	1
3381	1,5*	0,30-0,35	2,8-3,2	1



ETA 07/0145

ETA 13/0001



SIL4 INTO - SILIKATPUTZ K

SILICATE MINERAL COMPACT COATING FOR INDOOR AND OUTDOOR

Mineral finish with fiber-reinforced thickness available in various granulometries. With high workability, it is suitable for surfaces where a mineral finish with high water vapour diffusion and good water repellence is required, on restoring plasters and in cycles in green building. In accordance with DIN 18363, 2.4.6.

dilution
ready-to-use

covering time
16-48 hrs

FEATURES

- intonachino effect in various grain size
- excellent breathability
- good water repellence
- effective finishing for the restoration of walls with PALLADIO and GRIGONOVA solutions
- high vapour permeability, class I according to UNI EN ISO 7783-2
- thickness of the equivalent air layer $S_d = 0,093$ m

CODES

Code	base	bucket (kg)
- 52	0100 white	25
- 84A	traditional colors - cat. A	25
- 84B	trendy colors - cat. B	25
- 84C	prestige colors - cat. C	25
	particle size	tintometric base
438442	1,2	0300 neutral
438842	1,5	
439242	2	
439642	3	
438452	1,2	0100 white
438852	1,5	
439252	2	
439652	3	

Code	particle size	theoretical yield m ² /kg	theoretical consumption kg/m ²	layers
4384	1,2	0,40-0,45	2,2-2,5	1
4388	1,5	0,30-0,35	2,8-3,2	1
4392	2	0,28-0,33	3,0-3,5	1
4396	3	0,25-0,28	3,6-4,0	1



RITARDANTE PER INTONACHINO

SUITABLE SOLUTION FOR SLOWING THE DRYING OF FINISHING COATINGS

Suitable for all plasters of the Acrylic, siloxane, elastomeric and silicates line ONLY in summer or with ambient temperature above 25-30 ° C. Add RITARDANTE PER INTONACHINO to the coating respecting the recommended dosage, and mix thoroughly.

**theoretical
consumption**
250-400 grams (ml)
for 25 kg bucket

dilution
ready-to-use

FEATURES

- does not alter the characteristics of the coating
- increases drying time at high temperatures
- improves product application

CODES

Code	base	bucket (lt)
650003	0000 transparent	10

Closely related to their technical specifications, arteMURI fixatives differ in their use, highlighting the peculiarities of each application: efficiency, cost-effectiveness, quality.

The range includes also primers, useful to isolate the substrate from the finish.



PRIMERS AND FIXATIVES





primers and fixatives



NON CONTIENE SOSTANZE
DANNOSE PER LA SALUTE
FORMALDEIDE free



LEED 4.1
Compliant

ONE MICRO

CONSOLIDATING TRANSPARENT PRIMER IN MICRO-EMULSION

Water based high penetration product, suitable as a fixative for preparation on any wall surface. Fixed chalking and dusty sides of the support due to its high binding power. Formaldehyde and solvent free with low content of VOC.

theoretical consumption

0,10 litri/m²
per layer

theoretical yield

10 m²/liter

dilution

ready-to-use

covering time

6-8 hrs

FEATURES

- high penetration
- consolidating property similar to solvent product
- absorption regulation
- alkali resistance
- water based primer suitable for the consolidation in any situation and for any type of wall surface
- does not affect the vapour permeability of the support

CODES

Code	base	bucket (lt)
110250	0000 transparent	5
110215	0000 transparent	15



NON CONTIENE SOSTANZE
DANNOSE PER LA SALUTE
FORMALDEIDE free

UNO FIX

ACRYLIC WATER-BASED TRANSPARENT PRIMER

Acrylic impregnation primer suitable for application on any type of internal and external wall surface, to block, reduce and even absorption, promote adhesion and regulate the support before subsequent smooth and quartz finishes, fillers or thick coatings. Free of solvents, formaldehyde, and low VOC.

theoretical consumption

0,04 litri/m²
per layer

theoretical yield

25 m²/liter

dilution

1:6 with water

covering time

6-8 hrs

FEATURES

- very high yield
- fixing and consolidating properties
- uniform the surface absorption
- does not affect the vapour permeability of the support
- suitable for all types of plaster

CODES

Code	base	bucket (lt)
110101	0000 transparent	1 (box 6 pz)
110150	0000 transparent	5
110115	0000 transparent	15



NON CONTIENE SOSTANZE
DANNOSE PER LA SALUTE
FORMALDEIDE free

PRIMER 2W

ACRYL- SILOXANE FIXATIVE TRANSPARENT WATER BASED PRIMER

Acryl-siloxane impregnation primer with excellent alkalinity resistance and high binding power. Fixes the chalking of the surface and gives a high water repellence to the entire coating cycle with silossanic, acryl-silossanic and silanized finishes. Free from solvents, formaldehyde, and low VOC content.

theoretical consumption

0,10 litri/m²
per layer

theoretical yield

10 m²/liter

dilution

ready-to-use

covering time

6-8 hrs

FEATURES

- high penetration
- consolidating property
- absorption regulation
- excellent water repellence
- does not affect the vapour permeability of the support
- suitable for all types of plaster

CODES

Code	base	bucket (lt)
210815	0000 transparent	15



F4 SIL

SILICATE TRANSPARENT CONSOLIDATING PRIMER

Water mineral impregnation primer with high penetration power and consolidating properties. It is suitable for the treatment of surfaces with mineral products based on potassium silicate. To be used as a diluent of SIL4 BIO.

theoretical consumption

0,14 litri/m²
per layer

theoretical yield

7-14 m²/liter

dilution

ready-to-use

covering time

6-8 hrs

FEATURES

- high penetration
- consolidating property
- high adhesion
- absorption reduction
- does not affect the vapour permeability of the support
- compliance with standard DIN 18363 point 2.4.6

CODES

Code	base	bucket (lt)
410415	0000 transparent	15

Essential for the proper preparation of the support, to even out the absorptions and prepare the finishing, both internal and external. The surface preparation primers can also be used as a clinging bridge, thanks to the particle size fillers inserted in the formulation.



**SURFACE
PREPARATION
PRIMERS**





surface preparation primers



EOTA 07/0145

EOTA 13/0001



PRIMER UNI-KO GM

UNIVERSAL FILLING PRIMER FOR THICK COATINGS

Specific base for ETICS thermal insulation systems. Alkali resistant product with strong binding power. Creates a filling and structural surface that promotes the adhesion of successive thickness finishes and unifies the irregular surfaces.

theoretical consumption

0,14 litri/m²
per layer

theoretical yield

7,1 m²/liter

covering time

6-8 hrs

dilution brush

25-30% with water

dilution roll

15% with water

FEATURES

- filler for coating
- base for ETICS systems
- adhesion promoter
- high resistance to weathering and UV rays
- high vapour permeability, class I according to UNI EN ISO 7783-2
- thickness of the equivalent air layer $S_d = 0,088$ m

CODES

Code	base	bucket (lt)
673350	0100 white	5
673351	0100 white	14
673380A	traditional colors - cat. A	5
673381A	traditional colors - cat. A	14
673380B	trendy colors - cat. B	5
673381B	trendy colors - cat. B	14
673380C	prestige colors - cat. C	5
673381C	prestige colors - cat. C	14
	tintometric base	
673376	0300 neutral	4,67
673341	0300 neutral	13





PRIME GRUND 0.3

ACRYL-SILOXANE FILLING AND LEVELING PRIMER

Fine-grained filler for application on any wall surface, inside and outside. Reduces and evens the absorption of the support and promotes the aesthetic result of the entire painting cycle.

theoretical consumption 0,14 litri/m ² per layer	theoretical yield 7,1 m ² /liter	covering time 6-8 hrs
dilution brush 25-30% with water	dilution roll 15% with water	particle size 0,3 mm

FEATURES

- leveling and insulating
- adhesion promoter
- high resistance to weathering and UV rays
- excellent coverage
- universal filler
- high vapour permeability, class I according to UNI EN ISO 7783-2
- thickness of the equivalent air layer Sd = 0,078 m

CODES

Code	base	bucket (lt)
680000	0100 white	14
680084A	traditional colors - cat. A	14
680084B	trendy colors - cat. B	14
680084C	prestige colors - cat. C	14
	tintometric base	
680020	0300 neutral	13



GM GRUND 0.5

UNIVERSAL STRUCTURAL AND FILLING PRIMER

Medium-grain structural universal preparation primer for application on any internal and external wall surface. Thanks to the particle size, it can be used to roughen any type of support and to even out and regulate the back surface before the coloured finish.

theoretical consumption 0,15 litri/m ² per layer	theoretical yield 6,8 m ² /liter	covering time 6-8 hrs
dilution brush 15% with water	dilution roll 5-10% with water	particle size 0,5 mm

FEATURES

- leveling and insulating
- adhesion promoter
- high resistance to weathering and UV rays
- excellent coverage
- universal filler
- high vapour permeability, class I according to UNI EN ISO 7783-2
- thickness of the equivalent air layer Sd = 0,078 m

CODES

Code	base	bucket (lt)
673352	0100 white	14
673382A	traditional colors - cat. A	14



PRIMO

This article will be soon out of stock and not replaced

WATER-BASED TRANSPARENT FIXATIVE

With excellent resistance to alkalinity and high binding power. Fixes the chalking of the substrate and gives a high water repellence to the entire paint cycle

theoretical consumption

0,14 litri/m²
per layer

theoretical yield

7,1 m²/liter

dilution

15-20% with water

covering time

6-8 hrs

FEATURES

- leveling and insulating
- good coverage
- fondo pigmentato per rivestimenti
- fondo di adesione
- elevata permeabilità al vapore, classe I secondo UNI EN ISO 7783-2
- thickness of the equivalent air layer $S_d = 0,089$ m
- suitable for all types of plasters

CODES

Code	base	bucket (lt)
110551	0100 white	14
110581A	traditional colors - cat. A	14
110581B	trendy colors - cat. B	14
110581C	prestige colors - cat. C	14
	tintometric base	
110541	0300 neutral	13



F2 COPRENTE

This article will be soon out of stock and not replaced

SILOXANE WATER BASED TRANSPARENT FIXATIVE

Suitable for application on any type of internal and external wall surface to reduce and even absorption before the following smooth or quartz finishes, filling or thick coatings.

theoretical consumption

0,14 litri/m²
per layer

theoretical yield

7,1 m²/liter

dilution

25-30% with water

covering time

6-8 hrs

FEATURES

- high water repellence
- leveling and insulating
- good coverage
- mano di fondo per finiture a spessore
- elevata permeabilità al vapore, classe I secondo UNI EN ISO 7783-2
- thickness of the equivalent air layer $S_d = 0,078$ m
- suitable for all types of plasters

CODES

Code	base	bucket (lt)
211051	0100 white	14
211081A	traditional colors - cat. A	14
211081B	trendy colors - cat. B	14
211081C	prestige colors - cat. C	14
	tintometric base	
211041	0300 neutral	13



PRG 101 - BETONKONTAKT

UNIVERSAL LEVELLING AND FILLING STRUCTURAL PRIMER

Medium-grain structural universal preparation primer for application on any internal and external wall surface. Thanks to the granulometry it can be used to roughen any type of support and to even out and regulate the surface before the coloured finish

theoretical consumption

0,14 litri/m²
per layer

theoretical yield

7,1 m²/liter

covering time

24 hrs

dilution brush

25-30% with water

dilution roll

15-20% with water

particle size

0,7 mm

FEATURES

- rough effect
- excellent grip to the surface
- may be applied onto pre-stressed concrete surfaces, prefabricated composite, plasterboard and absorbing walls, both old and new

CODES

Code	base	bucket (lt)
616050	green	5
616015	green	15



PRG 10

PRIMER IN EMULSION BASED ON SYNTHETIC RESINS

With excellent versatility and resistance to alkali. Gives mechanical and adhesion strength when mixed with rendering and skimming mortar. It is suitable as clinging bridge and primer if properly diluted.

theoretical consumption

0,06 litri/m²
per layer

theoretical yield

17 m²/liter

covering time

8 ore

dilution as insulator

1:10 with water

dilution as additive

1:3-1:5 with water

FEATURES

- highly versatile
- used as base primer
- gives mechanical and adhesion strength
- excellent alkali resistance
- may be used to prepare roughcast mortars on concrete surfaces

CODES

Code	base	bucket (lt)
616350	0000 transparent	5
	0000 transparent	15



PRG FLEX

ELASTIC LATEX IN EMULSION BASED ON SYNTHETIC RESIN

Excellent elasticity and resistance to alkali. Added to adhesive products and to mixtures of sand and cement it improves the adhesiveness, elasticity and is suitable to seal micro cracks. Good compatibility with cement mixtures.

theoretical consumption

0,10 litri/m²
per layer

theoretical yield

10 m²/liter

dilution

1:1 with water before
mixing

FEATURES

- high elasticity
- good compatibility with cement mixes

CODES

Code	base	bucket (lt)
616350	0000 transparent	5



FONDO 03

ELASTOMERIC FILLING PRIMER

Structural and filling preparation primer, with excellent elasticity at low temperatures and excellent coverage power. Suitable as structural and filling primer for surfaces that are difficult to cover and have micro-cracks. Allows correct thickness and smooth effect.

theoretical consumption

0,18 litri/m²
per layer

theoretical yield

5,5 m²/liter

covering time

6-8 hrs

dilution brush

10-15% with water

dilution roll

5% with water

particle size

0,3 mm

FEATURES

- structural and filling
- high elasticity
- excellent coverage
- high resistance to weathering and UV rays
- high vapour permeability, class I according to UNI EN ISO 7783-2
- thickness of the equivalent air layer Sd = 0,117 m
- maintains high elasticity over time and in every seasonal period even at low temperatures

CODES

Code	base	bucket (lt)
310351	0100 white	14
310381A	traditional colors - cat. A	14



PRG SL P

SOLVENT BASED PIGMENTED ODOUR-FREE FIXATIVE FOR OUTDOOR

Product with excellent covering power, adhesion and water repellence, it is stain, mold and microorganisms resistant. It confers resistance to the external cycles and evens the surfaces.

theoretical consumption 0,14 litri/m ² per layer	theoretical yield 7,1 m ² /liter	covering time 24 hrs
dilution brush 25-30% with odourless diluent	dilution roll 13-18% with odourless diluent	

FEATURES

- high penetration
- excellent water repellence
- it has a high covering power, it evens out chromatically uneven surfaces, and regulates the absorption of the surface, creating the ideal support for finishing

CODES

Code	base	bucket (lt)
619115	0100 white	15



PRG SL T

SOLVENT FREE TRANSPARENT ODOUR-FREE CONSOLIDATING FIXATIVE FOR OUTDOOR

Excellent water repellency, consolidating power and high penetration. It ensures adhesion of the finishing and resistance of the entire cycle. Suitable for consolidating the back surface of old paintwork.

theoretical consumption 0,12 litri/m ² per layer	theoretical yield 8,3 m ² /liter	dilution brush ready-to-use
--	---	---------------------------------------

FEATURES

- high penetration
- excellent water repellence
- it has a high covering power, it evens out chromatically uneven surfaces, and regulates the absorption of the surface, creating the ideal support for finishing

CODES

Code	base	bucket (lt)
619025	0000 transparent	5
619050	0000 transparent	25



ARTESTUCCO

PLASTER FOR INTERIOR FINISHING

Product suitable for interior skimming and for filling small imperfections and micro cracks.

theoretical consumption
0,5-1 kg/m²

theoretical yield
2-1 m²/kg

dilution
ready-to-use

covering time
6 hrs per 1 mm thickness

FEATURES

- excellent adhesion
- low shrinkage
- easy to sand
- ease of application

CODES

Code	base	bucket (lt)
668750	paste	5
668752	paste	25



SEI MAKKIABLOK

INSULATING BASE FOR EXTERIOR AND INTERIOR WALL SURFACES

Product suitable, before final painting, for the pre-treatment of surfaces with difficult smoke spots, nicotine, soot, combustion residues, tannin and stains due old infiltrations.

theoretical consumption
0,5-1 kg/m²

theoretical yield
2-1 m²/kg

dilution
ready-to-use

covering time
24 h

FEATURES

- mineral surfaces regulator
- blocks surface chalking
- avoids after paint staining
- prevents the appearance of stains after painting treatment
- suitable for all indoor and outdoor surfaces

CODES

Code	base	bucket (lt)
610000	0100 white	5



The evolution of the traditional marmorino is a system with 4 products to decorate all flooring, to satisfy new needs of interior architecture and living: to create continuous seamless surfaces with the chromatic effects of stuccoes and cladding used on the wall. The spaces thus come defined and valued in an innovative way, with the typical refinement of craftsmen and decorators and with high technical performances.



InfinituS





InfinituS



PRIMER InfinituS

MONOCOMPONENT PRIMER

PRIMER INFINITUS is a mono-component primer based on acrylic resins that combined with special additives determine a high adhesion of the product to all kinds of surfaces. PRIMER INFINITUS can be applied to all kinds of surfaces such as: ceramic tiles, concrete, plaster, plasterboard, paints, resins, marble, wood, formica, melamine, and so on.

On INFINITUS floors the PRIMER is used to block the fibreglass mesh RETE R 51 on the surface.

theoretical consumption
0,10-0,15 l/m²

dilution
ready-to-use
up to 10% with water
if necessary

covering time
7-8 hrs

CODES

Code	base	bucket (lt)
851002	0100 white	2,5
851010	0100 white	10

RETE R 51

FIBERGLASS MESH AKALI RESISTANT

Glass fibre reinforcement mesh to be used in the INFINITUS cycle before applying the FONDO.

thickness of the treated mesh
0,24 mm

rib spacing
2,2 x 2,3 mm

weight
ca. 60 g/m²

CODES

Code	base	bucket (lt)
851001	roll 50 mq	H = 1 mt - L = 50 mt



FONDO InfinituS

FILLING BASE IN PASTE

To apply on the whole surface before finishing in order to level the floor. FONDO INFINITUS is a monocomponent product based on resins and special inerts with high resistance. The product is ready to use, it is very fluid, in white-grey colour and is used to create bonding layers between the support and the subsequent finishing coats with MARMORINO INFINITUS.

theoretical consumption
0,70-1,00 kg/m²

dilution
ready-to-use
monocomponent

covering time
12 hrs

CODES

Code	base	bucket (lt)
851015	0000	5
851020	0000	20



MARMORINO InfinituS

PASTE FINISHING TINTABLE WITH TINTOMETER SYSTEM

Resin finishing in paste, ideal for floors and walls finishing with a high aesthetic decoration result. Thanks to its formulation based on resins and inerts with high resistance, MARMORINO INFINITUS offers an elevated flexibility, resisting to the micro movements of the surface, with good mechanical and water resistance. It can be used for decoration of houses, shops, offices, showroom and so on. With MARMORINO INFINITUS it is possible to create infinite effects and colours as per ATELIER 502 colour card in the ArteMURI tintometer system. It is ready to use without addition of hardeners or film forming agents.

theoretical consumption

ca. 0,70-0,80 kg/m²
for thickness 300-500 µ
equal to:
first layer
ca. 380-450 g/m²
second layer
ca. 300-350 g/m²
tot min 700 g/m²

dilution

ready-to-use
monocomponent

covering time

3-4 ore
with MARMORINO
INFINITUS
24 hrs
with FINITURA
INFINITUS

particle size

0,25 mm - fine
0,7 mm - medium

CODES

Code	tipo	particle size	base	bucket (kg)
851025	fine	0,25 mm	0100 white	5
851030	fine	0,25 mm	0100 white	20
851026A	fine	0,25 mm	traditional colors - cat. A	5
851031A	fine	0,25 mm	traditional colors - cat. A	20
851027	medium	0,7 mm	0100 white	5
851032	medium	0,7 mm	0100 white	20
851028A	medium	0,7 mm	traditional colors - cat. A	5
851033A	medium	0,7 mm	traditional colors - cat. A	20



FINITURA InfinituS

POLYURETHANE FINISHING

Bi-component, transparent polyurethane finishing, it is used on low to medium mechanical wear surfaces, as protective of the surface and to improve the anti-scratch properties.

dilution

Water
0-10 parts by weight

pedonabilità

24 hrs

CODES

Code	base	bucket (lt)
851041	0000 transparent KIT FINITURA POLIURETANICA 5+0,5 lt - BICOMPONENT	5,5



Thermal comfort is one of the most demanded solutions for housing and can finally be obtained in an easy and fast way, simply painting the walls with i-RIFLEKTA products, reflecting the I.R. radiation and contributing to maintain the house comfort.



**i-RIFLEKTA
THERMAL COMFORT**





i-Riflekta



RIFLEKTA

HEAT REFLECTIVE OUTDOOR PAINT

Innovative acryl-siloxane thermo-reflective paint, due to special nano-dimensioned charges. Ideal as an energy improving cycle for the building, particularly in summer.

theoretical consumption 0,10 litri/m ² per layer	theoretical yield 5-6 m ² /kg	covering time 2-4 hrs
dilution brush 20-25% with water	dilution roll 5-10% with water	

FEATURES

- reflects over 90% of I.R.
- blocks heat transfer
- UV and alkali resistant
- good expansion capacity
- not water permeable according to EN ISO 1062-3
- protection against algae and mold

CODES

Code	base	bucket (lt)
710510	0100 white	10
710581A	traditional colors - cat. A	10
710581B	trendy colors - cat. B	10
710581C	prestige colors - cat. C	10



NANO COAT

REDUCED HEAT REFLECTIVE PLASTER

Innovative thick coating based on acryl-siloxane with special lightened fillers, with heat-reflecting charges, for the improvement of the energy performance of the building.

dilution ready-to-use	covering time 16-48 hrs
---------------------------------	-----------------------------------

FEATURES

- excellent substrate adhesion
- flexible
- protection against algae and mold
- water repellent
- highly breathable
- weather and UV resistant
- excellent workability, lightweight product
- water absorption category W2 according to ISO EN 1062-3
- water vapour permeability category V2 according to ISO EN 7783

CODES

Code	base	bucket (lt)
-52	0100 white	20
-84A	traditional colors - cat. A	20
-84B	trendy colors - cat. B	20
-84C	prestige colors - cat. C	20

Code	particle size	theoretical yield m ² /kg	theoretical consumption kg/m ²	layers
7107	1,2	0,60-0,50	1,6-2,0	1
7108	1,5	0,35-0,40	2,6-2,8	1



NON CONTIENE SOSTANZE
DANNOSE PER LA SALUTE
FORMALDEIDE free

RIFLEKTA IN

HEAT REFLECTIVE OUTDOOR PAINT

Innovative anti-mold paint with special nano-sized reflective fillers, for finishing interiors where it is necessary to improve living comfort by reducing the formation of condensation and heat losses. Free from solvents, formaldehyde and with very low levels of VOC.

theoretical consumption

0,12 litri/m²
per layer

theoretical yield

4,5 m²/kg

covering time

2-4 hrs

dilution brush

10-15% with water

dilution roll

3-5% with water

FEATURES

- Matt look
- protection against algae and mold
- excellent breathability
- cleaning Class 3 according to standard UNI EN ISO 11998
- two coats covering power Class 1 according to standard ISO 6504-3
- suitable for all types of plasters

CODES

Code	base	bucket (lt)
710405	0100 white	5
710410	0100 white	10
710480A	traditional colors - cat. A	5
710481A	traditional colors - cat. A	10
710480B	trendy colors - cat. B	5
710481B	trendy colors - cat. B	10



RASANTE PRONTO

FIBRO-REINFORCED SKIM PLASTER

Special ready-to-use skim plaster based on siloxane resins, slaked lime and lightweight micro and nano size fillers. It is designed to improve the thermal performance for the living comfort of buildings, to protect and to decorate the interior and exterior walls.

theoretical consumption

1,0 kg/m² per 1 mm
thickness

dilution

ready-to-use

covering time

10-12 days

FEATURES

- lightened product
- resistant to cracks
- prevents mold growth
- reflects I.R. thermal radiation
- excellent workability
- highly breathable
- excellent adhesion to support

CODES

Code	base	bucket (kg)
710919	0100 white	16



ROOF RIFLEKTA

THERMOREFLECTIVE LIQUID ELASTOMERIC SHEATH

Special thermo-reflective waterproofing membrane for roofing, walkable, resistant to water and snow stagnation, based on elastomeric resins and special nano size thermo-reflective fillers.

theoretical consumption

0,4 litri/m²
per layer

theoretical yield

ca. 2,5 m²/liter
in three layers

dilution

first layer
10% with water
second and third layer
max 5% with water

covering time

12-24 hrs

FEATURES

- reflects over 90% of I.R.
- resistant to dirt, mold and stains
- not water permeable according to EN ISO 1062-3
- excellent elasticity

CODES

Code	base	bucket (lt)
710915	0100 white	15





NANO ANTISALE

HIGH-TECH ANTI-SALT SOLUTION

Water-based treatment to encapsulate and prevent the formation of salt efflorescence on the surfaces. Suitable for bricks, cement surfaces, natural and artificial stones, plasters, cement joints.

theoretical consumption

0,20 litri/m²
per layer
depends on the
affected surface

theoretical yield

ca. 5-7 m²/liter

dilution

ready-to-use

covering time

6-8 hrs

FEATURES

- does not change the appearance of the surfaces
- low in VOC content

CODES

Code	base	bucket (kg)
710205	0000 transparent	5
710225	0000 transparent	15



PRIMER K

WATER BASED UNIVERSAL PRIMER

Ideal for the preparation of internal or external surfaces in concrete, plaster masonry, eco-building. The contained nanotechnology makes the substrate compact, homogeneous and suitable for subsequent finishing.

theoretical consumption

0,10 litri/m²
per layer
depends on the
affected surface

theoretical yield

ca. 10-12 m²/liter

dilution

ready-to-use

covering time

6-8 hrs

FEATURES

- very high penetration
- waterproof

CODES

Code	base	bucket (kg)
710305	0000 transparent	5
710310	0000 transparent	10

Water-based colouring pastes for the arteMURI tintometer system, with defined and constant pigmentary concentration, pre-milled and grounded in a suitable VOC-free wetting vehicle. They are formulated and produced with controlled features of colorimetric performance, specific weight and viscosity for metering machines use. The colouring pastes arteMURI for outdoor use possess high resistance to atmospheric agents and UV rays.



COLOURING PASTES AND TINTING BASES





colouring pastes and tinting bases

Tintometer system

The arteMURI tintometer system is an innovative system that with 15 water based colouring pastes offers the possibility to realize a wide chromatic range for decoration and protection of both interiors and exteriors:



Practical advices and warnings:

- Always check the colours developed:
it is absolutely necessary that the arteMURI tintometer system user verifies adequately the produced colours before application, obviously after drying and to the indirect solar light.
- We suggest to create and archive of all colours obtained with the tintometer machine: for this purpose we supply, together with the equipment, white cardboards on which to apply your colour tests, so to use them both as colour test and as following check for eventual site application.
- During the colour production, even if the tintometer bases and the colouring pastes are properly tested and inspected, we suggest to use products from the same production batch (as per Bucket label), to avoid even minor tone differences.
- To guarantee a correct use of the tintometer system we recommend to not overlook the requested regular maintenance of the supplied equipment (colour machine + mixer).



Sustainability in continuous evolution



VOC is a term for volatile organic substances, which are emitted from building materials in indoor environments. The presence of these substances can cause allergies, asthma, carcinogenic effects. The German regulation provides for the analysis of products on more than 200 substances detected, thus acting in a very restrictive manner and returning to the market a product of safe value.

The presence of formaldehyde in an environment is determined by: building materials, cleaning products, combustion appliances, and can cause drowsiness, irritation and headache. Using paints or finishes without formaldehyde means significantly reducing the contaminants of the internal air, ensuring an improvement in lifestyle and health. For this reason and to be consistent with our principles of quality research and sensitivity to natural products, we have updated the formulas of all our indoor paints.

The arteMURI paints are now formaldehyde-free and A+ certified, a symbol that is synonymous with quality and well-being finally combined with the unique performance of our products. The presence of volatile organic compounds (VOCs) in arteMURI products is now less than 1 g/l (thus less than the minimum quantity required by the regulations). In addition, following Directive 2004/42/EC, all colouring pastes in our tintometric system have been improved by bringing VOC values to levels below 1 g/l, thus making the products recognizable as VOC ZERO and harmless to the environment.



PASTA COLORANTE

PASTE FINISHING COLOURABLE WITH TINTING MACHINE

Innovative water-based pigment dyes for the arteMURI tintometric system, with a defined and constant concentration of pigments, pre-dispersed and ground in a specific wetting vehicle with very low VOC content. They have a wide colour range, high colouring power and high compatibility with the products of the arteMURI line.

FEATURES

- high resistance to weathering and UV rays for exteriors pastes
- excellent coverage and pigmentation
- high chromaticity
- excellent compatibility

CODES - COLOURING PASTES FOR EXTERIOR FINISHINGS

Code	color	paste	bucket (lt)
991092	BCA	white paste	2,5
993392	GOX	oxide yellow paste	2,5
992292	GBV	bismuth vanadium yellow paste	2,5
998792	VOS	oxide green paste	2,5
997592	COB	cobalt blue paste	2,5
996292	ROX	oxide red paste	2,5
995592	REX	exterior red paste	2,5
999092	NOX	oxide black paste	2,5
994492	AOX	oxide orange paste	2,5

CODES - COLOURING PASTES FOR INTERIOR FINISHINGS

Code	color	paste	bucket (lt)
992792	GOR	organic yellow paste	2,5
998092	VOG	ftalo green paste	2,5
997092	BLU	ftalo blue paste	2,5
995092	ROG	organic red paste	2,5
995392	MAG	magenta paste	2,5
997992	VIO	violet paste	2,5



TINTING BASES

CALCE D'EPOCA	SPATOLA	Code	base	bucket (kg)	
		544605	0100 white	5	
		544620	0100 white	20	
	MARMO CALCE	Code	base	bucket (kg)	
		544820	0100 white	20	
	PENTACALCE	Code	base	bucket (lt)	
		552150	0100 white	5	
		552151	0100 white	15	
	MARMORINO NATURALE	Code	base	bucket (kg)	
		539552	0100 white	25	
	CHINO	Code	base	particle size	bucket (kg)
		5090	0100 white	0,7 mm	25
		5290	0100 white	1,2 mm	25
	WASHABLE PAINTS	MURI ONE MATT	Code	base	bucket (lt)
125600			0100 white	1 (box 6 pz)	
125630			0100 white	5	
125660			0100 white	14	
125635			0300 neutral	4,33	
125665			0300 neutral	12,2	
MURI ONE SATIN		Code	base	bucket (lt)	
		125550	0100 white	5	
		125551	0100 white	14	
		125533	0300 neutral	4,33	
		125531	0300 neutral	12,2	
MURI ONE GLOSSY		Code	base	bucket (lt)	
		125050	0100 white	5	
		125051	0100 white	14	
		125033	0300 neutral	4,33	
		125031	0300 neutral	12,2	
UNO MATT		Code	base	bucket (lt)	
		124100	0100 white	0,75 (box 6 pz)	
		124102	0100 white	5	
		124105	0100 white	14	
		124101	0300 neutral	0,675	
		124103	0300 neutral	4,5	
		124106	0300 neutral	12,6	
POWER LUX		Code	base	bucket (lt)	
		124073	0100 white	5	
		124071	0100 white	14	
UNO LAVABILE		Code	base	bucket (lt)	
		124070	0100 white	0,75 (box 6 pz)	
		124050	0100 white	5	
		124051	0100 white	14	
		124060	0300 neutral	0,675	
		124045	0300 neutral	4,5	
		124053	0300 neutral	12,6	
UNO TEX		Code	base	bucket (lt)	
		126050	0100 white	5	
	126051	0100 white	14		

84

COMFORT & BENESSERE	ESATHERM	Code	base	bucket (lt)
		623350	0100 white	5
		623351	0100 white	14
	UNO NEXT	Code	base	bucket (lt)
		124110	0100 white	5
		124113	0100 white	14
		124111	0300 neutral	4,5
		124114	0300 neutral	12,6
	FILM PROPTECH	Code	base	bucket (lt)
		123650	0100 white	5
		123651	0100 white	14
TRANSPIRING PAINTS	UNO TRASPIRA	Code	base	bucket (lt)
		123070	0100 white	0,75 (box 6 pz)
		123050	0100 white	5
		123051	0100 white	14
OUTDOOR PAINTS	XILAN DUEL	Code	base	bucket (lt)
		236151	0100 white	15
		236153	0300 neutral	13,5
	XIL2 FILL	Code	base	bucket (lt)
		236641	0100 white	5
		236651	0100 white	15
		236640	0300 neutral	4,5
		236653	0300 neutral	13,5
	UNI-KA 2.0	Code	base	bucket (lt)
		237050	0100 white	5
		237051	0100 white	15
		237040	0300 neutral	4,5
		237041	0300 neutral	14
	BETON-ONE	Code	base	bucket (lt)
		137551	0100 white	15
		137531	0300 neutral	13
	UNO FILL	Code	base	bucket (lt)
		136056	0100 white	5
		136051	0100 white	15
		136057	0300 neutral	4,5
		136053	0300 neutral	13,5
	QUARZ-ONE	Code	base	bucket (lt)
		136550	0100 white	5
		136551	0100 white	15
		136533	0300 neutral	4,5
		136553	0300 neutral	13,5
	ELAS-TER FILL	Code	base	bucket (lt)
		336251	0100 white	15
		336253	0300 neutral	13,5
	SIL4 BIO	Code	base	bucket (lt)
		436351	0100 white	15
		436353	0300 neutral	13,5

COATINGS	XIL2 INTO	Code	Particle size	base	bucket (kg)
		237642 237842 238042 238242 238442 238642	0,7 1 1,2 1,5 2 3	0300 neutral	24
		237652 237852 238052 238252 238452 238652	0,7 1 1,2 1,5 2 3	0100 white	25
		Code	Particle size	base	bucket (kg)
	DUE SI	239042 239242 239442 239642 239848	1 1,2 1,5 2 3	0300 neutral	24
		239052 239252 239452 239652 239852	1 1,2 1,5 2 3	0100 white	25
	ONE COAT	Code	Particle size	base	bucket (kg)
		237652 237852 238052 238252 238452 238652	0,7 1 1,2 1,5 2 3	0100 white	25
		237642 237842 238042 238242 238442 238642	0,7 1 1,2 1,5 2 3	0300 neutral	24
		Code		base	bucket (kg)
	ELAS-TER	- 52		0100 white	25
		Code	Particle size	base	bucket (kg)
	SIL4 INTO	438442 438842 439242 439642	1,2 1,5 2 3	0300 neutral	24
		438452 438852 439252 439652	1,2 1,5 2 3	0100 white	25
PRIMERS	PRIMER UNI-KO GM	Code		base	bucket (lt)
		673350 673351 673376 673341		0100 white 0100 white 0300 neutral 0300 neutral	5 14 4,67 13
	PRIME GRUND 0.3	Code		base	bucket (lt)
		680000 680020		0100 white 0300 neutral	14 13
	GM GRUND 0.5	Code		base	bucket (lt)
		673352		0100 white	14
	FONDO 03	Code		base	bucket (lt)
		310351		0100 white	14



TINTING MACHINE HA 480-16

Automatic volumetric and ponderal dispenser, containing 16 stainless steel baskets with different capacities. It guarantees simplicity and speed of use. It allows to obtain the traditional and trendy colours that designers and new fashions increasingly require and propose, both for the decoration of exteriors and interiors.

FEATURES

- sequential dispensing
- 20 POM/SST baskets in 3/6 Lt capacity
- Piston pump with "Zerospurgo" technology
- Pump section: 100 ml
- Flow rate 1 lt/min
- 0,077 ml minimum quantity dispensed
- Can automatic elevator
- HWD 151x88x96 cm

CODES

Code

070000	HARBIL 480	16 baskets
--------	------------	------------



TINTING MACHINE HA 180-16

Automatic volumetric and ponderal dispenser, containing 16 stainless steel baskets with different capacities. It guarantees simplicity and speed of use. It allows to obtain the traditional and trendy colours that designers and new fashions increasingly require and propose, both for the decoration of exteriors and interiors.

FEATURES

- Sequential distribution
- ZeroPurge piston pump technology
- Universal dyes, solvents and water-based
- Pump size: 40 ml
- Flow rate: 0.4 - 0.5 l/min
- Minimum dosage: 0.05 ml
- HWD 140x81x100 cm

CODES

Code

070000	HARBIL 180	16 baskets
--------	------------	------------



MIXER GA 350

The GA350 hand mixer offers the latest in safety and ergonomics, including built-in safety mechanisms and intelligent operating designs for easier use. It is fast, built to last, requires little maintenance and therefore reduces operating costs.

FEATURES

- Manual locking
- Fully removable pot table
- Integrated locking unit
- 3 preset times
- 3 speeds (up to 230 rpm)
- Automatic speed limit
- Mechanical cradle lock
- Diameter plate inferihrs 38 cm
- Up to 40 kg; height 8-40 cm
- HDW 82x82x101 cm

CODES

Code

070001	GA 350
--------	--------



COMPLETE COMPUTER KIT

Kit consisting of:
Desktop computers.
Software for the operation of the Moebius tintometer.
Lcd monitor 17", Italian keyboard and optical mouse.

Code
070002

KIT COMPUTER



TECHNICAL SCALE

Balance 5 Kg, weighs from a minimum of 0,1g to a max 5.200 g. Supplied including power supply but also works on battery. External calibration by weight included.
Backlit LCD display.

Code
070004

TECHNICAL SCALE



LABEL WRITER 400

Label printer:
Automatic alignment of the label to avoid throwing the first print label.
Direct thermal transfer printing in grey tones; no ink or toner required.
Resolution at 300 dpi for perfect sharpness.

Code
070006

DYMO LABEL WRITER 400



NCS COLOUR CARD

NCS INDEX 2050 ORIGINAL

Provides a simple and practical overview of all 2050 NCS colors.

It is the result of a long and highly specialized research work, recognized worldwide.

The colour scheme is designed to have a clear division between grey, yellow, red, blue and green.

Code

070007

COLOUR CARD NCS 2050



ATELIER 502 COLOUR CARD

Selection of 502 inks resistant outdoor.

They have been chosen and made to meet the needs of users and designers.

Code

070011

COLOUR CARD ATELIER 502



DISPLAYING ELEMENTS

Totem display with metal base and brochure holder, dedicated to the retailer with tintometer.

Dimensions L98 x H190 x P40 cm.

Counter display with brochure and colour card holder, to be placed on the desk

Dimensions L 38 x H 41 x P 18 cm.

Decorative graphics for the arteMURI corner, in forex.

Dimensions L 80 x H 80 cm.

Dimensioni L98 x H190 x P40 cm.



Code

9804010006

TOTEM ATELIER 502

9802310006

DISPLAY ATELIER 502

070011

ARTEMURI GRAPHIC

Note

[illegible]

FORNACI CALCE GRIGOLIN SpA
Via Bombardieri 14
31010 Ponte della Priula TV
Tel. +39 0422 5261

www.fornacigrigolin.it

